

WILLI GELLER  
**Creation**  
PRODUCT CATALOGUE





“I have no secret – my success is a result of all my experiences.”

## Simply Brilliant – then as now

Inspired by the desire for a unique and vital copy of nature's own creation, the internationally renowned dental technician Willi Geller created a metal and ceramics range in 1988 which made quite a splash: **perfect, almost natural restorations** became possible all at once – masterly in their physical properties and reliable and reproducible in terms of shading. With Creation, each tooth was suddenly able to retain its own character – in shade, form and function

The new ceramic materials from Switzerland quickly set the trend for dental technology worldwide. Geller's **“master ceramics”** and his distinctive layering technique set benchmarks for a top-class dental aesthetic. Through the opportunity for ideal natural replicas, and through the seemingly **inexhaustible variety** of the metal and ceramics range, the dental technician gained an entirely new profile – the profile of an artist.

### Experience as a source of success

Founded as a “one-man company” 30 years ago, the dental company has continued to grow and develop steadily: new manufacturing technologies, additional fusions and effect materials, as well as **expanded indications and, more recently, a light-curing veneer composite with “Creation Brilliance”**. Today, Creation is one of the world's most important manufacturers of ambitious ceramics systems, and resin and composite teeth with a strong profile. The innovative ceramic and composite materials and denture teeth are successfully processed in over 70 countries **across the globe**. And the users are not the only ones who are impressed; dentists and patients are also convinced by our “Simply Brilliant“ aesthetics concept.

**Willi Geller's dental creations represent the original – and are just as brilliant today.**

WILLI GELLER  
*Creation*

## Creation Highlights

VENEERING CERAMIC	Page	CERAMIC ACCESSORIES	Page
<b>Metal</b>		CreaPen-Separating Pen	30
Creation CC – Classic Metal Ceramic	05	Liquid Firing Pad	30
		Creation Brush Kit	30
<b>Zirconium</b>		Aqualine master	31
Creation ZI-CT – Zirconium Dioxide Ceramic	10	Aqualine smart	31
Creation ZI-F – Low-Fusing Zirconium Dioxide Ceramic	14	Aqualine mini	31
<b>Lithium Disilicate</b>			
Creation LS/LS Press – Lithium Disilicate			
Veneering and Pressable Ceramic	19		
<b>COLOURS</b>	Page	<b>COMPOSITE</b>	Page
<b>CreaColor</b>		<b>Classic</b>	
Make up Neo	24	Creation VC	33
In Nova Neo	24		
<b>LIQUIDS</b>	Page	<b>DENTURE TEETH</b>	Page
Modelling Liquid – High & Low Fusing	26	Creopal	41
Opaque Liquid – High & Low Fusing	26	Creapearl 2	46
Shoulder Liquid	26		
Universal & Glaze Liquid	27		
Moisturing Fluid	27	<b>PRODUCT LIST</b>	Page
In Nova Neo Fluid	27	Product List	52
Make up Neo Fluid	27		
Make up Neo Reconditioner	27		
<b>SHADE GUIDES</b>	Page		
Creation Shade Guides	28		

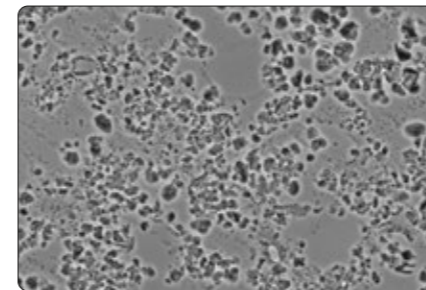
# CERAMIC

“Creation is the only eligible choice for a dental technician to create convincing, which means naturally appearing, restorations.”

*Hubert Schenk*



REM-picture,  
etched, ceramic surface:



Leucite-reinforced metal ceramic CC

**CREATION CC –  
technically refined – inspired by nature**

Creation CC is a high-fusing metal ceramic with unique optical and physical properties that has developed constantly in line with growing aesthetic demands – **recognized worldwide for 30 years!**

The perfectly coordinated ceramic materials have excellent homogeneity and thus guarantee high flexural strength. The result: a densely sintered structure for **pure and non-porous layering** with the utmost reliability.

The pure potash feldspar with micro-pure leucite crystal structure in Creation CC creates iridescent light refraction and natural brilliance and enhances the strength. Exceptional colour nuances can additionally be created with the unique effect materials.

The ceramic bonder Crea Alloy Bond also acts as a CTE buffer between metal and ceramic – for improved adhesive properties to non-precious metal and greater colour reliability.

With the modular classic brand Creation CC, metal-ceramic restorations can be produced with impressive aesthetics and dimensional stability – for **superb dental artistry!**

**Creation CC – natural brilliance and efficiency.**

### THE BRILLIANCE OF CREATION CC:

- Unique, lifelike aesthetics thanks to highly pure potash feldspar
- Resilience due to consistently high flexural strength
- Natural colour effect and light dynamics due to leucite crystals
- Ease of handling thanks to consistent colour and layering system
- Processing reliability since 1988



CC Creapast Kit | 000300  
Complete paste opaques with modifier

- 16 Opaque O-A1-D4 . . . . . 3g
- 5 Opaque Dentine Modifier . 3g
- 1 Creapast Brush
- 1 CC Manual



CC Bleach Shades Kit | 000250  
Complete bleach shades colours

- 1 Bleach Creapast Opaque O-AB . . . . . 3g
- 3 Bleach Dentine BD-A, B, BO . . . . . 20g
- 1 Bleach Enamel S-AB . . . 20g
- 1 Bleach Shoulder SP-AB. 15g
- 1 Shoulder Liquid . . . . . 25ml
- 1 Modelling Liquid ML-H. 25ml
- 1 Bleach Shade Guide
- 1 CC Color Chart/Firing Chart



CC Opaque Kit | 000800  
Complete powder opaques with modifier

- 16 Opaque O-A1-D4 . . . . . 20g
- 8 Opaque Modifier OM-11-17, G . . . . . 15g
- 1 Foundation Opaque FOP . . . . . 20g
- 2 Opaque Liquid OL-H . . 50ml
- 1 Universal & Glaze Liquid 25ml
- 1 Shade Guide
- 1 CC Color Chart
- 1 CC Manual



CC Gingiva Kit | 001590  
Complete gingiva colours

- 1 Creapast Opaque O-G. . . 3g
- 1 Opaque Modifier OM-G . 15g
- 8 Gingiva G1-7, N. . . . . 15g
- 1 Opaque Liquid OL-H . . 25ml
- 1 Modelling Liquid ML-H . 25ml
- 1 Shade Guide



CC Kit 1 | 000804  
Basic porcelains kit (opaque dentines, dentines, incisals)

- 16 Opaque Dentine OD-A1-D4 . . . . . 15g
- 16 Dentine D-A1-D4. . . . . 20g
- 4 Enamel E-57-60 . . . . . 20g
- 2 Transpa NT, OT . . . . . 20g
- 1 Clear CL-O . . . . . 20g
- 1 Glaze GL . . . . . 10g
- 2 Modelling Liquid ML-H . 50ml
- 1 Universal & Glaze Liquid 25ml
- 2 Shade Guides
- 1 CC Color Chart
- 1 CC Manual



CC Shoulder Kit | 001503  
Complete shoulder porcelains

- 10 Shoulder Powder SP-21-29, G . . . . . 15g
- 1 Shoulder Liquid . . . . . 25ml
- 1 CC Color Chart/Firing Chart



CC Kit 2 | 001508  
Effect porcelains kit

- 5 Opaque Dentine OD-32, 37, 41, 43, 44. . . 15g
- 1 Dentine D-CW . . . . . 20g
- 2 Approximal Dentine AD-1, 2. . . . . 15g
- 1 Clear UC . . . . . 20g
- 5 Transpa TI-1-5 . . . . . 20g
- 8 Effect Enamel SI-01-06, SO-10, 11 . . . 20g
- 4 Pearl Enamel PS-0-3. . . 20g
- 6 Neck Transpa HT-51-56 15g
- 6 Make In MI-61-66 . . . . . 15g
- 1 Correction Powder KM. . 20g
- 2 Modelling Liquid ML-H 50ml
- 1 Universal & Glaze Liquid 25ml
- 2 Shade Guides
- 1 CC Color Chart
- 1 CC Manual



CC Transition Dentine Kit | 000801  
Basic porcelains kit (transition dentines, incisals)

- 16 Opaque Dentine OD-A1-D4 . . . . . 15g
- 16 Transition Dentine TD-A1-D4 . . . . . 20g
- 4 Enamel E-57-60 . . . . . 20g
- 1 Clear CL-O . . . . . 20g
- 2 Transpa NT, OT . . . . . 20g
- 1 Glaze GL . . . . . 10g
- 2 Modelling Liquid ML-H . 50ml
- 1 Universal & Glaze Liquid 25ml
- 1 Shade Guide
- 1 CC Color Chart
- 1 CC Manual



CC Starter Kit | 000915  
Introduction kit with tooth shades A2, A3, A3.5, B2, B3

- |  |  |
|--|--|
| 2 Crea Alloy Bond . . . . . 4g               | 5 Transpa NT, OT, TI-1, 4, 5 . . . . . 20g |
| 5 Creapast Opaque. . . . . 3g                | 2 Effect Enamel SI-02, 04 . 20g            |
| 5 Opaque Dentine . . . . . 15g               | 3 Neck Transpa HT-52-54 15g                |
| 3 Opaque Dentine OD-32, 37, 43 . . . . . 15g | 1 Glaze GL . . . . . 10g                   |
| 5 Dentine . . . . . 20g                      | 2 Make In MI-63, 65 . . . . . 15g          |
| 2 Enamel E-58, 59 . . . . . 20g              | 2 Modelling Liquid ML-H . 25ml             |
| 1 Clear CL-O . . . . . 20g                   | 2 Universal & Glaze Liquid 25ml            |
|  | 1 CC Manual                                |



CC Introduction Kit | 000920  
Introduction kit with tooth shades A1, A2, A3, A3.5, B1, B2, C1, C2, C3, D2, D3

- |  |  |
|--|--|
| 11 Creapast Opaque. . . . . 3g               | 3 Effect Enamel SI-02, 04, SO-10 . . . . . 20g |
| 3 Opaque Dentine OD-32, 37, 43 . . . . . 15g | 1 Pearl Enamel PS-1 . . . . . 20g              |
| 11 Dentine . . . . . 20g                     | 3 Neck Transpa HT-52-54 15g                    |
| 4 Enamel E-57-60 . . . . . 20g               | 1 Glaze GL . . . . . 10g                       |
| 1 Clear CL-O . . . . . 20g                   | 1 Modelling Liquid ML-H . 50ml                 |
| 4 Transpa NT, TI-1, 2, 4 . . . 20g           | 1 Universal & Glaze Liquid 25ml                |
|  | 1 CC Color Chart & CC Manual                   |

**Crea Alloy Bond | 000080**

Crea Alloy Bond is a bonding agent which was specially developed for neutralising leaking metallic oxides. At the same time it acts as an efficient CTE buffer between porcelain and metal alloy.



- Safety owing to high flexural strength (70 MPa)
- No marginal discolorations – staining metallic oxides are neutralised
- Greater colour reliability because of the golden yellow undertone
- Compatible with all materials from Creation CC and LF

**WOP Opaque**

The coating of opaque can be carried out at only 950 °C instead of 980 °C with the WOP paste. This procedure is useful with certain high-gold alloys and galvanised frameworks. After the WOP coating the second coating of opaque is applied.



- Firing temperature 950 °C

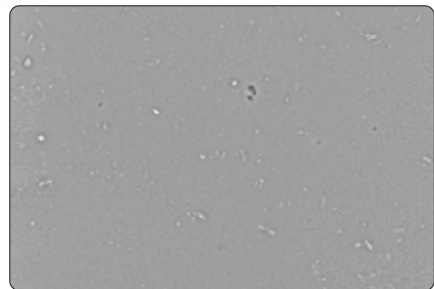
- |  |
|--|
| CC Creapast WOP sand . . . . . 3g   000322   |
| CC Creapast WOP sahara . . . . . 3g   000323 |
| CC Creapast WOP gold . . . . . 3g   000324   |

A1	A2	A3	A3,5	A4	B1	B2	B3	B4	C1	C2	C3	C4	D2	D3	D4
OPAQUE DENTINE															
A1	A2	A3	A3,5	A4	B1	B2	B3	B4	C1	C2	C3	C4	D2	D3	D4
DENTINE															
TD-A1	TD-A2	TD-A3	TD-3,5	TD-A4	TD-B1	TD-B2	TD-B3	TD-B4	TD-C1	TD-C2	TD-C3	TD-C4	TD-D2	TD-D3	TD-D4
TRANSITION DENTINE															
57	58	59	60		CL-O clear	UC window		NT neutral	OT opal	TI-01 blue	TI-02 white	TI-03 pink	TI-04 yellow	TI-05 grey	
ENAMEL						CLEAR		TRANSPA							
SI-01 light yellow	SI-02 medium yellow	SI-03 heavy yellow	SI-04 light orange	SI-05 medium orange	SI-06 heavy orange	SO-10 blue	SO-11 orange		PS-0 white	PS-1 blue/w.	PS-2 flamingo	PS-3 orange			
EFFECT ENAMEL						PEARL ENAMEL									
HT-51 iridescent	HT-52 khaki	HT-53 sand	HT-54 honey	HT-55 borde.	HT-56 ocher	SP-21 neutral	SP-22 flamingo	SP-23 sand	SP-24 gold	SP-25 red brown	SP-26 yellow gold	SP-27 ivory	SP-28 opaque yellow	SP-29 honey	SP-G gingival
NECK TRANSPA HIGH FLUORESCENT						SHOULDER POWDERS HIGH FLUORESCENT									
MI-61 ivory	MI-62 lemon	MI-63 honey yellow	MI-64 flamingo	MI-65 gold	MI-66 olive			AD-1 light yellow	AD-2 orange						
MAKE IN HIGH FLUORESCENT INTERNAL POWDER						APPROXIMAL DENTINE									
G1 purple	G2 dark pink	G3 light pink	G4 flamingo	G5 rose	G6 dark pink opaque	G7 violet	G-N neutral		OD-32 havanna	OD-37 curry	OD-41 orange	OD-43 ivory	OD-44 cuba		
GINGIVAL						OPAQUE DENTINE									
O-AB	BD-A	BD-B	BD-BO		TD-BA	S-AB	SP-AB	KM							
BLEACH OPAQUE		BLEACH DENTINE			TRANSITION D		BLEACH EN.		BLEACH SHOULDER		CORRECTION POWDER				

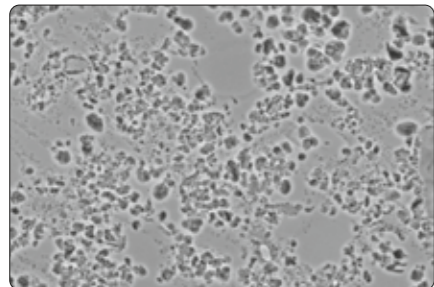
Shades A1-D4 are referring to the Vita® Shade Guide. Vita® is a registered trademark of VITA Zahnfabrik H. Rauter GmbH & Co. KG, Bad Säckingen, Germany.



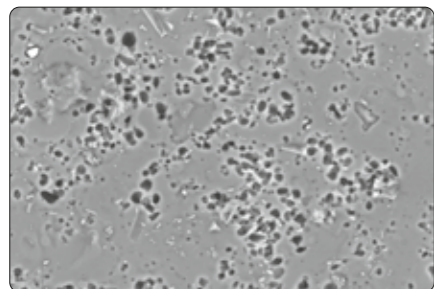
REM-pictures etched, ceramic surfaces:



Glass ceramic



Leucite-reinforced metal ceramic CC



Leucite-reinforced zirconium dioxide ceramics ZI-CT

**CREATION ZI-CT – the fine art of ceramics**

Creation ZI-CT is an innovative feldspar ceramic containing leucite crystals which is matched to the CTE of all high-strength zirconium dioxide frameworks and structures – whether white, coloured or translucent.

The high proportion of pure potash feldspars creates light scatter that is comparable to that of natural teeth and a **brilliant colour effect**, while the micro-fine leucite crystals improve mechanical strength and thereby ensure a **durable ceramic structure**.

Fascinatingly fluorescent: the special bonding agent Frame Shade NT guarantees strong adhesion to the zirconium dioxide framework and also increases its fluorescence – for **powerful bond strength** without tensile stresses.

The modular Creation ZI-CT allows restorative work on zirconium dioxide with impressive colour and dimensional stability and with **brilliant light reflection and dynamics**.

**High-fusing, high aesthetics, high stability: Creation ZI-CT.**

*“Unobtrusively beautiful – a true Creation!”  
Andreas Nolte, MDT*

**THE BRILLIANCE OF CREATION ZI-CT**

- Natural colour effect and light dynamics due to leucite crystals
- Excellent bonding strength thanks to high firing temperature of 910 °C
- Extremely low shrinkage for fewer correction firings and more efficiency
- Reliability due to homogeneous crystalline structure and high resilience



**ZI-CT Kit 1 | 620501**  
*Basic porcelains kit (dentines, incisors)*

- |  |                                 |
|--|---------------------------------|
| 1 Frame Shade NT . . . . . 4g                      | 1 Correction Powder KM . . 20g  |
| 5 Opaque Dentine<br>OD-32, 37, 41, 43, 44. . . 15g | 1 Glaze GL . . . . . 10g        |
| 16 Dentine D-A1–D4. . . . . 20g                    | 1 Universal & Glaze Liquid 25ml |
| 4 Enamel E-57–60 . . . . . 20g                     | 2 Modelling Liquid ML-H . 50ml  |
| 1 Clear CL-O . . . . . 20g                         | 1 ZI-CT Color Chart & Manual    |
| 2 Transpa NT, OT . . . . . 20g                     |                                 |
| 2 Approximal Dentine<br>AD-1, 2. . . . . 15g       |                                 |



**ZI-CT Kit 2 | 620502**  
*Effect porcelains kit*

- |   |                                 |
|---|---------------------------------|
| 1 Clear UC . . . . . 20g                        | 1 Universal & Glaze Liquid 25ml |
| 5 Transpa TI-1–5. . . . . 20g                   | 2 Modelling Liquid ML-H . 50ml  |
| 8 Effect Enamel<br>SI-01–06, SO-10, 11. . . 20g | 1 ZI-CT Color Chart & Manual    |
| 4 Pearl Enamel PS-0–3. . . 20g                  |                                 |
| 6 Neck Transpa<br>HT-51–56. . . . . 15g         |                                 |
| 6 Make In MI-61–66. . . . 15g                   |                                 |



**ZI-CT Starter Kit | 620503**  
*Introduction kit with tooth shades A1, A2, A3, A3.5, B2, B3*

- |   |                                  |
|---|----------------------------------|
| 1 Frame Shade NT . . . . . 4g                   | 1 Pearl Enamel PS-0. . . . . 20g |
| 3 Opaque Dentine<br>OD-32, 37, 43 . . . . . 15g | 3 Neck Transpa HT-52–54 15g      |
| 6 Dentine . . . . . 20g                         | 3 Shoulder SP-21, 23, 28 . 15g   |
| 2 Enamel E-58, 59 . . . . . 20g                 | 2 Make In MI-63, 65 . . . . 15g  |
| 1 Clear CL-O . . . . . 20g                      | 1 Glaze GL . . . . . 10g         |
| 6 Transpa NT, OT<br>TI-1, 3–5 . . . . . 20g     | 2 Modelling Liquid ML-H . 25ml   |
| 2 Effect Enamel SI-02, 04 20g                   | 1 Shoulder Liquid . . . . . 25ml |
|   | 1 Universal & Glaze Liquid 25ml  |
|   | 1 ZI-CT Color Chart & Manual     |



**ZI-CT Introduction Kit | 620506**  
*Introduction kit with tooth shades A1, A2, A3, A3.5, B1, B2, C1, C2, C3, D2, D3*

- |   |   |
|---|---|
| 1 Frame Shade NT . . . . . 4g                   | 1 Pearl Enamel PS-0. . . . . 20g        |
| 3 Opaque Dentine<br>OD-32, 37, 43 . . . . . 15g | 3 Neck Transpa<br>HT-52–54. . . . . 15g |
| 11 Dentine . . . . . 20g                        | 1 Glaze GL . . . . . 10g                |
| 1 Clear CL-O . . . . . 20g                      | 2 Modelling Liquid ML-H . 50ml          |
| 4 Enamel E-57–60 . . . . . 20g                  | 1 Universal & Glaze Liquid 25ml         |
| 4 Transpa NT, TI-1, 3, 4 . . 20g                | 1 ZI-CT Color Chart & Manual            |
| 1 Effect Enamel SO-10 . . . 20g                 |   |



ZI-CT Bleach Shades Kit | 620505  
Complete bleach shades colours

- 3 Bleach Dentine  
BD-A, B, BO . . . . . 20g
- 1 Bleach Enamel S-AB . . . . . 20g
- 1 Shoulder SP-AB. . . . . 15g
- 1 Modelling Liquid ML-H 25ml
- 1 Shoulder Liquid . . . . . 25ml
- 1 ZI-CT Color Chart



ZI-CT Gingiva Kit | 620504  
Complete gingiva colours

- 8 Gingiva G1-7, N. . . . . 15g
- 1 Modelling Liquid ML-H 25ml
- 1 ZI-CT Color Chart
- Bleach & Gingiva



ZI-CT Shoulder Kit | 620507  
Complete shoulder porcelains

- 10 Shoulder  
SP-21-29, G . . . . . 15g
- 1 Shoulder Liquid . . . . . 25ml
- 1 ZI-CT Color Chart/Firing Chart

DENTINE															
A1	A2	A3	A3,5	A4	B1	B2	B3	B4	C1	C2	C3	C4	D2	D3	D4
ENAMEL				CLEAR		TRANSPA									
57	58	59	60		CL-O clear	UC window		NT neutral	OT opal	TI-01 blue	TI-02 white	TI-03 pink	TI-04 yellow	TI-05 grey	
EFFECT ENAMEL															
SI-01 light yellow	SI-02 medium yellow	SI-03 heavy yellow	SI-04 light orange	SI-05 medium orange	SI-06 heavy orange	SO-10 blue	SO-11 orange		PS-0 white	PS-1 blue/w.	PS-2 flamingo	PS-3 orange			
NECK TRANSPA HIGH FLUORESCENT								SHOULDER POWDERS HIGH FLUORESCENT							
HT-51 irides- cent	HT-52 khaki	HT-53 sand	HT-54 honey	HT-55 borde.	HT-56 ocher	SP-21 neutral	SP-22 flamingo	SP-23 sand	SP-24 gold	SP-25 red brown	SP-26 yellow gold	SP-27 ivory	SP-28 opaque yellow	SP-29 honey	
MAKE IN HIGH FLUORESCENT INTERNAL POWDER								APPROXIMAL DENTINE							
MI-61 ivory	MI-62 lemon	MI-63 honey yellow	MI-64 flamingo	MI-65 gold	MI-66 olive		AD-1 light yellow	AD-2 orange							
GINGIVAL															
G1 purple	G2 dark pink	G3 light pink	G4 flamingo	G5 rose	G6 dark pink opaque	G7 violet	G-N neutral	OPAQUE DENTINE							
OD-32 havanna	OD-37 curry	OD-41 orange	OD-43 ivory	OD-44 cuba											
BLEACH DENTINE			BLEACH EN.			BLEACH SHOULDER			CORRECTION POWDER						
BD-A	BD-B	BD-BO	S-AB			SP-AB			KM						

Shades A1-D4 are referring to the Vita® Shade Guide. Vita® is a registered trademark of VITA Zahnfabrik H. Rauter GmbH & Co. KG, Bad Säckingen, Germany.



**CREATION ZI-F – naturally brilliant – brilliantly natural**

Creation ZI-F is a tried and tested zirconium dioxide ceramic. It is perfectly suited to veneering any kind of zirconium dioxide framework.

At the same time, the modular materials are also an ideal choice as **add-on materials** for Creation ZI-CT because their firing temperature is about 100°C lower than the high-fusing zirconium dioxide veneering ceramic.

Creation ZI-F is an **extremely versatile** zirconium dioxide ceramic with high **natural light reflection**, combined with all the material-related advantages of zirconium dioxide.

With the unique effect materials, exceptional colour nuances can also be created rapidly and comfortably – for maximum impact with minimum effort.

**Creation ZI-F – natural light dynamics!**



**ZI-F Kit 1 | 653010**  
*Basic porcelains kit (dentines, incisals)*

- |   |                                 |
|---|---------------------------------|
| 5 Frame Shade FS-1-4, IL . . . . . 10g    | 2 Modelling Liquid ML-L . 50ml  |
| 16 Dentine D-A1-D4 . . . . . 20g          | 1 Universal & Glaze Liquid 25ml |
| 4 Enamel E-57-60 . . . . . 20g            | 2 Shade Guides                  |
| 2 Clear CL-O, UC . . . . . 20g            | 1 ZI-F Color Chart              |
| 6 Transpa NT, OT, TI-1, 3-5 . . . . . 20g | 1 ZI-F Manual                   |
| 1 Glaze GL . . . . . 10g                  |                                 |



**ZI-F Kit 2 | 653015**  
*Effect porcelains kit*

- |  |   |
|--|---|
| 5 Opaque Dentine OD-32, 37, 41, 43, 44 . . 15g | 2 Approximal Dentine AD-1, 2. . . . . 15g |
| 5 Effect Enamel SI-02, 04, 06, SO-10, 11 20g   | 1 Shoulder Liquid . . . . . 25ml          |
| 2 Pearl Enamel PS-0, 3. . . 20g                | 2 Modelling Liquid ML-L . 25ml            |
| 3 Neck Transpa HT-52-54 15g                    | 1 Universal & Glaze Liquid 25ml           |
| 5 Shoulder SP-22-25, 28 . 15g                  | 2 Shade Guides                            |
| 3 Make In MI-61, 63, 65 . . 15g                | 1 ZI-F Color Chart                        |
|  | 1 ZI-F Manual                             |
|  | 1 ZI-F Color Chart/Firing Chart           |



**ZI-F Bleach Shades Kit | 652050**  
*Complete bleach shades colours*

- |  |                                  |
|--|----------------------------------|
| 1 Bleach Frame Shade FS-AB . . . . . 10g   | 1 Shoulder Liquid . . . . . 25ml |
| 3 Bleach Dentine BD-A, B, BO . . . . . 20g | 1 Modelling Liquid ML-L . 25ml   |
| 1 Bleach Enamel S-AB . . . 20g             | 1 Shade Guide                    |
| 1 Bleach Shoulder SP-AB. 15g               | 1 ZI-F Color Chart/Firing Chart  |



**ZI-F Gingiva Kit | 603030**  
*Complete gingiva colours*

- |                                 |
|---------------------------------|
| 1 Frame Shade FS-G . . . . 10g  |
| 8 Gingiva G1-7, N . . . . . 15g |
| 1 Modelling Liquid ML-L . 25ml  |
| 1 Shade Guide                   |



**ZI-F Starter Kit | 653025**  
*Introduction kit with tooth shades A1, A2, A3, A3.5, B2, B3*

- |  |                                  |
|--|----------------------------------|
| 2 Frame Shade FS-1, 2 . . . 10g              | 3 Neck Transpa HT-52-54 15g      |
| 3 Opaque Dentine OD-32, 37, 43 . . . . . 15g | 3 Shoulder SP-22, 23, 28 . 15g   |
| 6 Dentine . . . . . 20g                      | 2 Make In MI-63, 65 . . . . 15g  |
| 2 Enamel E-58, 59 . . . . . 20g              | 1 Glaze GL . . . . . 10g         |
| 1 Clear CL-O . . . . . 20g                   | 1 Shoulder Liquid . . . . . 25ml |
| 6 Transpa NT, OT, TI-1, 3-5 20g              | 2 Modelling Liquid ML-L . 25ml   |
| 2 Effect Enamel SI-02, 04 . 20g              | 1 Universal & Glaze Liquid 25ml  |
| 1 Pearl Enamel PS-02. . . . 20g              | 1 ZI-F Color Chart               |
|  | 1 ZI-F Manual                    |



**ZI-F Single Products**

- |                       |                      |
|-----------------------|----------------------|
| Frameshade FS-NT      | 601087 . . . . . 4g  |
| Shoulder Powder SP-21 | 602121 . . . . . 15g |
| Transpa TI-2          | 652077 . . . . . 20g |
| Neck Transpa HT-51    | 652151 . . . . . 15g |
| Neck Transpa HT-56    | 652156 . . . . . 15g |
| Correction Powder KM  | 652090 . . . . . 20g |



# 16 Creation ZI-F – Color Chart

A1	A2	A3	A3,5	A4	B1	B2	B3	B4	C1	C2	C3	C4	D2	D3	D4
<b>DENTINE</b>															
OD-32 havanna	OD-37 curry	OD-41 orange	OD-43 ivory	OD-44 cuba		57	58	59	60						
<b>OPAQUE DENTINE</b>					<b>ENAMEL</b>										
CL-O clear	UC window		NT neutral	OT opal	TI-01 blue	TI-02 white	TI-03 pink	TI-04 yellow	TI-05 grey						
<b>CLEAR</b>		<b>TRANSPA</b>													
PS-0 white	PS-3 orange		SI-02 medium yellow	SI-04 light orange	SI-06 heavy orange	SO-10 blue	SO-11 orange		HT-51 irides- cent	HT-52 khaki	HT-53 sand	HT-54 honey	HT-56 ocher		
<b>PEARL ENAMEL</b>			<b>EFFECT ENAMEL</b>			<b>NECK TRANSPA HIGH FLUORESCENT</b>									
SP-21 neutral	SP-22 flamingo	SP-23 sand	SP-24 gold	SP-25 red brown	SP-28 opaque yellow										
<b>SHOULDER POWDERS HIGH FLUORESCENT</b>															
MI-61 ivory	MI-63 honey yellow	MI-65 gold		AD-1 light yellow	AD-2 orange	G1 purple	G2 dark pink	G3 light pink	G4 flamingo	G5 rose	G6 dark pink opaque	G7 violet	G-N neutral		
<b>MAKE IN HIGH FLUORESCENT INTERNAL POWDER</b>			<b>APPROXIMAL D.</b>			<b>GINGIVAL</b>									
BD-A	BD-B	BD-BO		S-AB	SP-AB										
<b>BLEACH DENTINE</b>			<b>BLEACH EN.</b>		<b>BLEACH SH.</b>		<b>KM CORRECTION POWDER</b>								

Shades A1–D4 are referring to the Vita® Shade Guide. Vita® is a registered trademark of VITA Zahnfabrik H. Rauter GmbH & Co. KG, Bad Säckingen, Germany.



# LITHIUM DISILICATE

“With Creation LS, there is now finally a veneering ceramic for lithium disilicate, which offers me a wide scope for creating restorations with a natural effect. The colour concept matches that of the tried and tested Creation ceramics, with an outstanding light reflection, plenty of brightness and strong, dynamic colours. The combination of Creation LS Press and Creation LS provides me with many benefits in my daily work, and makes it easier for me to create restorations with a vivid effect.”

*Sebastien Mosconi, Oral Design*



*created by Christian Vordermayer, Oral Design*

## CREATION LS/LS Press – Press, veneer and individualise with lithium disilicate!

Efficiency and natural aesthetics: Creation LS Press and Creation LS are a perfect ceramic symbiosis offering dental technicians reliability and stability but also brilliant colours and versatility on and with lithium disilicate, as standard is not enough for Creation!

Creation Willi Geller completes the product range with a new pressable and veneering ceramic allowing the dental technician outstanding aesthetics, whether used single or in combination. With the Creation LS Press blanks and the Creation LS veneering ceramic perfectly matched to the lithium disilicate frame highly aesthetic and stable all-ceramic restorations can be manufactured – efficiently pressed and then individually veneered resp. characterised with the proven CreaColor stains and modifiers.

Reliably combined for extended possibilities: the two system components Creation LS Press and Creation LS follow master ceramist Willi Geller's "Simply Brilliant" philosophy proven for 30 years. They allow the dental technician manufacturing naturally beautiful anterior and posterior restorations with resp. on lithium disilicate assuring system safety.

### Creation LS / LS Press – the sophisticated combination

#### THE BRILLIANCE OF THE CREATION LS:

- Comprehensive colour assortment for individual veneering and characterisation
- Layer build-up according to the tried-and-tested colour coding concept of Creation Willi Geller
- Natural colour brilliance and light effects due to feldspar content
- Homogeneous crystal structure and outstanding surface density
- Maximum stability – even after several firings

#### THE BRILLIANCE OF THE CREATION LS PRESS:

- High strength due to homogeneous crystalline structure: > 500 MPa
- Minimal invasive preparation: 0.3 mm veneer, 0.8 mm anterior
- Creative freedom of manufacturing: full veneers, partial veneers
- The appropriate blank for every indication



**LS Kit | 830083**

*Basic and effect porcelains with the tooth shades BD-A, BD-B, BD-B0, A1, A2, A3, A3.5, B1, B2, B3, C2, D2*

- |  |  |
|--|--|
| 4 Opaque Dentine<br>OD-32, 37, 41, 43 . . . . . 15 g         | 3 Effect Enamel<br>SI-02, 04, SO-10 . . . . . 20 g |
| 12 Dentine BD-A, BD-B, BD-B0,<br>A1-A3.5, B1-B3, C2, D2 20 g | 1 Pearl Enamel PS-0 . . . . . 20 g                 |
| 4 Enamel E-57-60 . . . . . 20 g                              | 4 Neck Transpa HT-51-54. 15 g                      |
| 1 Bleach Enamel S-AB . . . 20 g                              | 2 Make-in MI-61, 63 . . . . . 15 g                 |
| 1 Clear CL-0 . . . . . 20 g                                  | 1 Glaze GL . . . . . 10 g                          |
| 7 Transpa NT, OT,<br>TI-01-05 . . . . . 20 g                 | 2 Modelling Liquid ML-L . 50 ml                    |
|  | 1 Universal & Glaze Liquid 25 ml                   |
|  | 1 Creation LS/LS Press Manual                      |



**LS Press Starter Kit | 830080**

*Introduction kit with the tooth shades BD-A, BD-B0, A1, A2, A3 and matching press blanks with different opacities MO, LT, MT, HT*

- |  |  |
|--|--|
| 3 LS Press MO-0-2. . . . 5 x 3 g                 | 1 Clear CL-0 . . . . . 20 g                    |
| 1 LS Press LT-A. . . . . 5 x 3 g                 | 1 Transpa OT . . . . . 20 g                    |
| 1 LS Press MT-B00. . . . 5 x 3 g                 | 2 Effect Enamel<br>SI-02, SO-10 . . . . . 20 g |
| 2 LS Press HT-2, 3 . . . . 5 x 3 g               | 1 Pearl Enamel PS-0 . . . . . 20 g             |
| 2 Opaque Dentine<br>OD-32, 41 . . . . . 15 g     | 1 Make-in MI-61, 63 . . . . . 15 g             |
| 5 Dentine BD-A, BD-B0,<br>D-A1-A3 . . . . . 20 g | 1 Glaze GL . . . . . 10 g                      |
| 2 Enamel E-58, 59 . . . . . 20 g                 | 1 Modelling Liquid ML-L . 50 ml                |
| 1 Bleach Enamel S-AB . . . 20 g                  | 1 Universal & Glaze Liquid 25 ml               |
|  | 1 Creation LS/LS Press Manual                  |



**LS Press Introduction Kit A1, A2 | 830081**

*The easy introduction into the system with the tooth shades A1, A2 and the matching press blanks with different opacities MO-1, LT-A, HT-2*

- |                                   |                                  |
|-----------------------------------|----------------------------------|
| 1 LS Press MO-1 . . . . . 5 x 3 g | 1 Clear CL-0 . . . . . 20 g      |
| 1 LS Press LT-A. . . . . 5 x 3 g  | 1 Transpa OT . . . . . 20 g      |
| 1 LS Press HT-2 . . . . . 5 x 3 g | 1 Glaze GL . . . . . 10 g        |
| 1 Opaque Dentine OD-32 . 15 g     | 1 Modelling Liquid ML-L . 50 ml  |
| 2 Dentine D-A1, A2 . . . . . 20 g | 1 Universal & Glaze Liquid 25 ml |
| 1 Enamel E-58 . . . . . 20 g      | 1 Creation LS/LS Press Manual    |



**LS Press Introduction Kit A3 | 830082**

*The easy introduction into the system with the tooth shade A3 and the matching press blanks with different opacities MO-2, LT-A, HT-3*

- |                                   |                                  |
|-----------------------------------|----------------------------------|
| 1 LS Press MO-2 . . . . . 5 x 3 g | 1 Clear CL-0 . . . . . 20 g      |
| 1 LS Press LT-A. . . . . 5 x 3 g  | 1 Transpa OT . . . . . 20 g      |
| 1 LS Press HT-3 . . . . . 5 x 3 g | 1 Glaze GL . . . . . 10 g        |
| 1 Opaque Dentine OD-32 . 15 g     | 1 Modelling Liquid ML-L . 50 ml  |
| 2 Dentine D-A3 . . . . . 20 g     | 1 Universal & Glaze Liquid 25 ml |
| 1 Enamel E-59 . . . . . 20 g      | 1 Creation LS/LS Press Manual    |
| 1 Effect Enamel SO-10 . . . 20 g  |                                  |



**Creation LS Press MO-Ingot (Medium Opacity)**

MO press ingots are the first choice for full veneering. Due to their high opacity, they feature a high light reflection and are suitable for covering discoloured dies and titanium abutments.

**Colours**

- MO-0, MO-1, MO-2 . . . . . 5 x 3 g



**Creation LS Press LT-Ingot (Low Translucency)**

LT press ingots can be used for restorations to be fully or partially veneered with Creation LS. With thin layer thicknesses, Creation LT can also be used for monolithic restorations.

**Colours**

- LT-A, LT-B, LT-C, LT-D. . . . . 5 x 3 g



**Creation LS Press MT-Ingot (Medium Translucency)**

MT press ingots are the first choice for fully-anatomic restorations which are characterised by individual staining. The MT ingot can also be used for full or partial veneering.

**Colours**

- MT-B00, MT-B0, MT-A1-3, MT-B1, B2, MT-D2 . . . . . 5 x 3 g



**Creation LS Press HT-Ingot (High Translucency)**

HT press ingots are particularly suitable for minimal invasive restorations (e.g. inlays, onlays and veneers) where mainly the natural enamel is replaced. The shade individualisation is carried out in the staining technique.

**Colours**

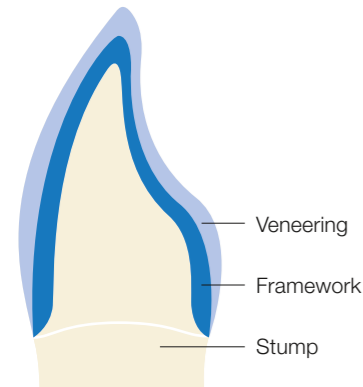
- HT-B00, HT-B0, HT-1-4 . . . . . 5 x 3 g

Processing techniques

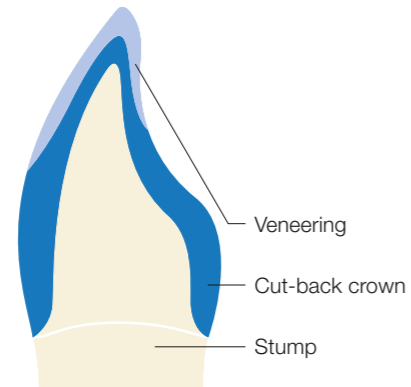
Opacity	Indications					Processing techniques		
	Occlusal veneers	Veneers	Inlays	Onlays	Crown	Staining technique	Cut-back technique	Layering technique
MO Medium Opacity					✓			✓
LT Low Translucency					✓		✓	✓
MT Medium Translucency	✓	✓	✓	✓	✓	✓	✓	
HT High Translucency	✓	✓	✓	✓	✓	✓		



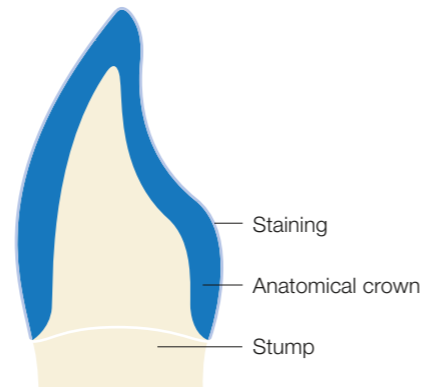
Layering technique



Cut-back technique



Staining technique



Colour reference table

Tooth colour	A1	A2	A3	A3,5	A4	B1	B2	B3	B4	C1	C2	C3	C4	D2	D3	D4
MO Medium Opacity	MO-1	MO-2			MO-1	MO-2	MO-1	MO-2								
LT Low Translucency	LT-A				LT-B			LT-C			LT-D					
MT Medium Translucency	MT-A1	MT-A2	MT-A2/-A3		MT-A3	MT-B0/-B1	MT-B2	MT-B2	MT-A3	MT-B1	MT-A1	MT-D2	MT-D2	MT-D2	MT-D2	MT-A2
HT High Translucency	HT-2	HT-3	HT-4	HT-1	HT-3			HT-4	HT-3	HT-4	HT-3	HT-4	HT-3			

Materials which are not related to the Vita®shade guide:

Bleach	MO-0	MT-B00	MT-B0	HT-B00	HT-B0
--------	------	--------	-------	--------	-------

**LS-PRESS COLOR CHART**

**MEDIUM OPACITY**

A1 A2 A3 A3,5 A4 B1 B2 B3 B4 C1 C2 C3 C4 D2 D3 D4

**LOW TRANSLUCENCY**

BD-A BD-B BD-BO OD-32 havanna OD-37 curry OD-41 orange OD-43 ivory E-57 E-58 E-59 E-60 S-AB

**MEDIUM TRANSLUCENCY**

CL-O clear NT neutral OT opal TI-01 blue TI-02 white TI-03 pink TI-04 yellow TI-05 grey SI-02 medium yellow SI-04 light orange SO-10 blue PS-0 white

**HIGH TRANSLUCENCY**

HT-51 iridescent HT-52 khaki HT-53 sand HT-54 honey GL MI-61 ivory MI-63 honey yellow KM

**NECK TRANSPA HIGH FLUORESCENT**

**GLAZE**

**MAKE IN HIGH FLUORESCENT INTERNAL POWDER**

**CORRECTION POWDER**

**BLEACH DENTINE**

**OPAQUE DENTINE**

**DENTINE**

**ENAMEL**

**BLEACH EN.**

**EFFECT ENAMEL**

**PEARL ENAMEL**



**CREACOLOR – stains and modifiers for all ceramics**

CreaColor is a complete “two in one” colour system which can be used to place individual colour nuances simply and efficiently for all ceramic surfaces and materials – whether by the internal or external staining technique.

The physical properties of the high-quality stains and modifiers are so perfectly matched to the ceramic surfaces and materials that they can be worked universally with all layering and pressed ceramics, pressed or fired dentine cores as well as zirconium dioxide frames – after all, colour creativity should be unlimited! Furthermore, the new stains are extremely fine-grained and fluorescent and they can readily be mixed with each other.

CreaColor is made up of two components:

- CreaColor Make up Neo
- CreaColor In Nova Neo

**THE BRILLIANCE OF CREACOLOR:**

- Utmost colour brilliance for internal and external colouring
- Versatile and efficient: one system for all ceramics
- Natural colour effect due to very high fluorescence values
- Easy to handle: can be mixed with each other and can be corrected

CreaColor Kit | 001200  
Contains Make up Neo Kit & In Nova Neo Kit



Make up Neo Kit | 001100  
Glazing and fluorescent stains

- 13 Fluorescent Stain Glazes  
MUN-F1–F13 . . . . . 4g
- 4 Dentine Shades MUN-FA–FD  
in the four Vita® colour groups for colour corrections  
and for painting onto press ingots . . . . . 4g
- 1 Fluorescent Glaze GL-F . . . . . 4g
- 1 Make up Neo Fluid . . . . . 25ml
- 1 Make up Neo Reconditioner Fluid . . . . . 8ml  
(for freshening up concentrated stains)
- 1 Brush No. IV



In Nova Neo Kit | 001150  
All-purpose modifiers

- 10 Fluorescent Modifiers  
INN-1–10. . . . . 3g
- 2 Effect Shades IL, CRL (Illusion and Crackliner)  
for individual accents . . . . . 3g
- 1 In Nova Neo Fluid . . . . . 25ml
- 1 Brush No. IV

**WILLI GELLER**  
*Creation*

**CREACOLOR COLOR CHART**

**MAKE UP NEO**

MUN-F1 white	MUN-F2 eggshell	MUN-F3 lemon yellow	MUN-F4 mandarine	MUN-F5 flamingo	MUN-F6 apricot	MUN-F7 light brown	MUN-F8 medium brown	MUN-F9 olive	MUN-F10 red
MUN-F11 blue	MUN-F12 grey	MUN-F13 deep blue	MUN-FA stain A	MUN-FB stain B	MUN-FC stain C	MUN-FD stain D	MUN-GL-F Glaze	UF	Recon- ditioner

**IN NOVA NEO**

INN-1 melone	INN-2 rose	INN-3 yellow	INN-4 red brown	INN-5 brown	INN-6 olive	INN-7 grey	INN-8 blue	INN-9 white	INN-10 mais	INN-CRL Crackli- ner	INN-IL Illusion	INN- FLUID

**Fewer bottles – more simplicity and efficiency:** For more clarity and space on the laboratory table, Creation liquids can be obtained in high fusion or low fusion versions.



**Modelling Liquid – High & Low Fusing**

Standard modelling liquid for mixing Creation ceramics except for shoulder ceramics (SP).

- ML-H (High) for high fusion ceramics Creation CC and ZI-CT
- ML-L (Low) for low fusion ceramic Creation ZI-F

Modelling Liquid High Fusing . . . . . 25 ml | 000012  
 Modelling Liquid High Fusing . . . . . 50 ml | 000013  
 Modelling Liquid High Fusing . . . . . 250 ml | 000014  
 Modelling Liquid High Fusing . . . . . 1.000 ml | 000015

Modelling Liquid Low Fusing . . . . . 25 ml | 000016  
 Modelling Liquid Low Fusing . . . . . 50 ml | 000017  
 Modelling Liquid Low Fusing . . . . . 250 ml | 000018

**Opaque Liquid – High Fusing**

Mixing liquid for the high fusion ceramic Creation CC.



Opaque Liquid High Fusing . . . . . 25 ml | 000019  
 Opaque Liquid High Fusing . . . . . 50 ml | 000020  
 Opaque Liquid High Fusing . . . . . 250 ml | 000021

**Shoulder Liquid**

Universal modelling liquid for mixing all SP shoulder ceramics from Creation.



Shoulder Liquid . . . . . 25 ml | 000025  
 Shoulder Liquid . . . . . 50 ml | 000026



**Universal & Glaze Liquid**

Additional universal liquid with a wide range of uses.

- Addition of a very small amount into the ceramic mixed with ML enhances the smoothness
- The pre-drying time must be extended during firing
- Mixing all Creation glazing materials and CreaColor colours In Nova Neo and Make up Neo
- Remoistening of Creapast

Universal & Glaze Liquid . . . . . 25 ml | 000010  
 Universal & Glaze Liquid . . . . . 50 ml | 000011



**Moisturing Fluid**

For extensive restorations and complex corrections, as a moisturiser for the applied ceramics.

- No more drying out, the ceramics remain consistently modellable
- Efficient and simple: one fluid for all ceramics
- Longer working time for mixed materials – especially for sizeable work
- Targeted application due to controllable moisture content

Moisturing Fluid . . . . . 25 ml | 000090



**In Nova Neo Fluid**

Mixing liquid for In Nova Neo.

In Nova Neo Fluid . . . . . 25 ml | 001163



**Make up Neo Fluid**

Mixing liquid for Make up Neo.

Make up Neo Fluid . . . . . 25 ml | 001125

**Make up Neo Reconditioner**

For freshening up concentrated stains.

Make up Neo Reconditioner . . . . . 8 ml | 001126

**KIT-BASED SHADE GUIDES**

Art. no.	Article name
000064	CC/Shade Guide Kit 1 804
000073	CC/Shade Guide Kit 2 1508
000076	ZI-FLF.TI/Shade Guide Kit 1 (28 Shades)
000077	ZI-FLF.TI/Shade Guide Kit 2 (26 Shades)
000087	CC/Shade Guide Transition Dentine
000092	ZI-CT/Shade Guide Kit 1
000093	ZI-CT/Shade Guide Kit 2

**SHADE GUIDES**

Shades A1–D4 are referring to the Vita® Shade Guide.  
 Vita® is a registered trademark of VITA Zahnfabrik H. Rauter GmbH & Co. KG, Bad Säckingen, Germany.

**Shade Guide Dentine A - D**

Art. no. 000040

A1 A2 A3 A3,5 A4 B1 B2 B3 B4  
 C1 C2 C3 C4 D2 D3 D4

**Shade Guide Opaque Dentine A - D**

Art. no. 000041

A1 A2 A3 A3,5 A4 B1 B2 B3 B4  
 C1 C2 C3 C4 D2 D3 D4

**Shade Guide Transpa**

Art. no. 000042

CL-O UC NT OT KM

**Shade Guide Opaque Dentine + AD**

Art. no. 000043

OD-32 OD-37 OD-41 OD-43 OD-44 AD-1 AD-2

**Shade Guide Enamel**

Art. no. 000044

57 58 59 60 SI-01 SI-02 SI-03 SI-04 SI-05  
 SI-06 SO-10 SO-11 PS-0 PS-1 PS-2 PS-3

**Shade Guide Transpa Modifier**

Art. no. 000045

TI-01 TI-02 TI-03 TI-04 TI-05  
 HT-51 HT-52 HT-53 HT-54 HT-55 HT-56

**Shade Guide Make In**

Art. no. 000046

MI-61 MI-62 MI-63 MI-64 MI-65 MI-66

**Shade Guide Shoulder**

Art. no. 000047

SP-21 SP-22 SP-23 SP-24 SP-25 SP-26 SP-27 SP-28 SP-29  
 SP-G

**Shade Guide Gingiva**

Art. no. 000048

G1 G2 G3 G4 G5 G6 G7 G-N

**Shade Guide Bleach**

Art. no. 000049

BD-A BD-B BD-BO S-AB SP-AB

**Shade Guide Wheel Empty**

Art. no. 000091

**Shade Guide Single Shade Tab**

Art. no. 000058 + Color description



**CreaPen Separating Pen**

The double-ended ceramic insulation pen with one pointed and one broad nib for surfaces or grooves respectively can be simply used on the sealed die.

CreaPen Separating Pen | 000059



**Liquid Firing Pad**

The liquid firing pad for all Creation systems precisely fixes the object on the fireproof tray.

- Stable hold on the firing tray
- Easy to handle because of proven dispenser design
- Safe because of firing stability and optimum heat/warmth build-up onto the object
- Economical because of precise measuring
- Can be used for all Creation systems
- Tough and easy to remove

Liquid Firing Pad | 000081



**Creation Brush Kit**

The six different sizes of the first-class Kolinsky red sable brush with a heavy wooden holder perfectly meet all the requirements of layering techniques.

Creation-Brush-Kit | 000136

- 1 Brush No. I | 000131
- 2 Brush No. II | 000132
- 3 Brush No. III | 000133
- 4 Brush No. IV | 000134
- 5 Brush No. V | 000135
- 6 Brush Creapast No. VI | 000321



**aqua line**



**Aqualine Mixing Trays**

With Aqualine, materials will always have the right viscosity. Drying out is prevented by the cellulose strips continuously absorbing liquid from the reservoir.

**Aqualine master**

Dimension: 335 x 225 x 25 mm  
Components: Tray with glass plate (light grey) and hinged cover, self-adhesive write-on labels, cellulose strips

Aqualine master . . . . . anthracite | AMA-001  
Aqualine master . . . . . white | AMA-002

**Aqualine smart**

Dimension: 260 x 170 x 32 mm  
Components: Tray with glass plate (light grey) and hinged cover, self-adhesive write-on labels, cellulose strips

Aqualine smart . . . . . anthracite | AS-001  
Aqualine smart . . . . . white | AS-002

**Aqualine mini**

Dimension: 133 x 71 x 23 mm  
Components: Tray with glass plate (light grey) and hinged cover, cellulose strips

Aqualine mini . . . . . anthracite | AM-001

**ACCESSORIES**

**Aqualine master** Glass Plate, printed light grey. . . . . 1 piece | AP-010

**Aqualine master** Cellulose Strips 40 pieces . . . . . AP-013

**Aqualine master** Labels, self-adhesive for stain . . . . . 5 pieces | AMA-018 for ceramic. . . . . 30 pieces | AMA-019

**Aqualine master/smart** Stain Kit, made of porcelain 1 stain tray/1 mixing tray. . . . . AS-016

**Aqualine smart** Glass Plate, printed light grey. . . . . 1 piece | AS-010

**Aqualine smart** Cellulose Strips 30 pieces . . . . . AS-012

**Aqualine mini** Tray Box with stain tray, with 15 cavities 1 piece . . . . . AM-002

**Aqualine mini** Cellulose Strips 40 pieces . . . . . AM-010

**Aqualine** Pool Set Dimension: 105 x 65 x 48 mm, rinsing cup 250 ml, sponge, sponge holder transparent. . . . . AS-014

**Aqualine** Pool Set Sponge 5 pieces . . . . . AS-015

**Aqualine** Glass Care 2 x 30 ml . . . . . AC-001

**Aqualine** Two in One Build up Liquid 500 ml . . . . . AC-002



# COMPOSITE

“Creation VC is an aesthetic combination offering us versatile solutions. At the same time it gives us complete freedom to create amazing results with relatively little effort, for all indications from the aesthetic temporary to the final work.”

*Hans-Joachim Lotz*



## CREATION VC – definitely aesthetic and versatile!

**Brilliant colours, natural light dynamic**, and high processing and system quality. The new micro-hybrid composite not only possesses unmatched durability and mechanical stability, but also well-balanced opalescence and translucence. Based on **hybrid MFR technology** and the **tried-and-tested colour coding concept**, it offers dental technicians a unique, versatile, colourfast and sturdy composite system, with a total of 102 individual porcelains in a user-friendly packaging concept. The **flow materials** are a particular highlight and can be processed almost like ceramic materials due to their excellent application and modelling properties, as well as the wide range of natural gingival shades and make-up stains – for vivid and effective **aesthetics in red and white!**

On the basis of a unique filler structure and the familiar colour and layer system used by ceramics specialists, natural analogue composite restoration with the tried-and-tested Creation brilliance is now possible.

Thanks to the non-adhesive consistency and balanced viscosity, the new composite material is ideal for modelling and can be polished to a fine shine.

The modular **Creation VC** complete system offers the dental technician a virtually unlimited number of colour and structural combinations, a wide spectrum of different consistencies and processing possibilities, and a customised portfolio of new technologies such as cuvette technology (pressing and injection methods), as well as compatibility with **Creopal Shell**.

**Creation VC – an expressive and high-performance composite system.**

## THE BRILLIANCE OF CREATION VC:

- **Unique, natural-looking aesthetics** due to microhybrid filler structure/hybrid MFR technology
- **A wide variety of indications** for metal-supported and metal-free indications
- **Perfect, safe and co-ordinated combinations** with **Creopal Shells**
- **High mechanical strength**
- **Resilience** through equally high resistance to bending
- **Different viscosities**
- **Natural colour effect and light dynamics**
- **Safe processing and bonding** thanks to latest generation primers

VC Kit 1 | 820201

Basic materials kit (opaques, opaque dentines, dentines, incisors)

Amazingly simple and varied:

Beside 16 opaques, 5 opaque dentines and 16 standard dentines in high density colours, dental technicians also have 4 assigned incisal materials at their disposal for an individual aesthetic. In addition, the set contains a further 2 primers, a variety of accessories and 2 opaques:

**VC Base Opaque O-BO:** Paste opaque with excellent flow and light-curing qualities, also sets in undercuts for mechanical retentions, and provide a good primer.

**VC Cervical Opaque O-CO:** effectively prevents metal edges from showing through, directly applied after the VC Base Opaque. VC Cervical can also be used occlusally or lingually for intensifying, or mixed with the opaques.



- |                                  |                              |
|----------------------------------|------------------------------|
| 1 Base Opaque O-BO . . . 2.4ml   | 1 Metal Primer . . . . . 5ml |
| 1 Cervical Opaque O-CO. 2.4ml    | 10 Disposable Palette        |
| 16 Opaque O-A1–D4 . . . . 2.4ml  | 1 Mixing Pad                 |
| 5 Opaque Dentine                 | 10 Brush Round, Size 1       |
| OD-32, 37, 41, 43, 44. . . 2.9ml | 10 Brush Flat, Size 1        |
| 16 Dentine D-A1–D4 . . . . 2.9ml | 2 Brush Holder               |
| 4 Enamel E-57–60 . . . . . 2.9ml | 1 Brush No. 7                |
| 1 Separator . . . . . 5ml        | 2 Syringe Plunger            |
| 1 Diamond Polisher . . . . . 8g  | 3 Instructions for use       |
| 1 Air Protect . . . . . 10ml     | 1 Creation VC Workbook       |
| 1 Composite Primer . . . . . 3ml |                              |

VC Kit 2 | 820202

Effect porcelains kit

A colour system, a layering concept and a ceramic-like feeling:

The extension set offers dental technicians a wide spectrum for creating a natural look, using a variety of opalescent and translucent porcelains – even for very thin layer thicknesses. The **Flow porcelains** are a real highlight. With its unique filler technology, this fluid composite shows an extremely homogeneous distribution of ultra-fine particles within the matrix. The filler bonds perfectly to the matrix, guaranteeing a very high bonding strength. The excellent polishing qualities ensure that when this almost self-polishing material is used for long-term restorations, it will give off a shine that remains for a considerable period of time. The flow materials are outstandingly suited for bonding with the Creopal Shells, and promise a durable bond with stable colouring, thanks to the latest generation of primer (VC Composite Primer). Producing restorations in the injection technique as well as the classical layering of veneers and tabletops are only some of the possibilities for the universal use of the Flow porcelains.



- |                                    |                                  |
|------------------------------------|----------------------------------|
| 2 Pearl Enamel PS-1, 2 . . . 2.9ml | 2 Flow Opaque Dentine            |
| 3 Effect Enamel SI-01–03. 2.9ml    | OD-A2, A3 . . . . . 2ml          |
| 4 Transpa                          | 2 Flow Enamel EN-L, T . . . 2ml  |
| TI-01, 02, 04, 05 . . . . . 2.9ml  | 1 Composite Primer . . . . . 3ml |
| 3 Neck Transpa                     | 20 Dispensing Tips               |
| HT-52–54. . . . . 2.9ml            | 2 Syringe Plunger                |
| 9 Flow Dentine                     | 3 Instructions for use           |
| BW, A1–3,5, B1–3, HT . . 2ml       |                                  |

VC Kit 1 Starter | 820206

Introduction kit in the 5 most common base shades A2, A3, A3.5, B2, B3

Besides 5 opaques, 3 opaque dentines and 5 standard dentines in high density colours, dental technicians also have 3 assigned incisal materials at their disposal for individual aesthetics. In addition, the set contains a variety of accessories and the Composite Primer.



- |                                  |                                  |
|----------------------------------|----------------------------------|
| 1 Base Opaque O-BO . . . 2.4ml   | 1 Air Protect . . . . . 10ml     |
| 1 Cervical Opaque O-CO. 2.4ml    | 1 Composite Primer . . . . . 3ml |
| 5 Opaque                         | 10 Disposable Palette            |
| O-A2–A3.5, B2, B3 . . . 2.4ml    | 1 Mixing Pad                     |
| 3 Opaque Dentine                 | 10 Brush Round, Size 1           |
| OD-32, 37, 43 . . . . . 2.9ml    | 10 Brush Flat, Size 1            |
| 5 Dentine                        | 2 Brush Holder                   |
| D-A2–A3.5, B2, B3 . . . 2.9ml    | 1 Brush No. 7                    |
| 3 Enamel E-57–59 . . . . . 2.9ml | 2 Syringe Plunger                |
| 1 Separator . . . . . 5ml        | 3 Instructions for use           |
| 1 Diamond Polisher . . . . . 8g  | 1 Creation VC Workbook           |

VC Kit 2 Starter | 820207

Effect porcelains introduction kit

A colour system, a layering concept and a ceramic-like feeling with a reduced selection of the most common shades – based on kit 1. Can be completed according to the requirements. The set offers dental technicians a wide spectrum for creating a natural look, using a variety of opalescent and translucent porcelains – even for very thin layer thicknesses. The **Flow porcelains** are a real highlight.



- |                                   |                                  |
|-----------------------------------|----------------------------------|
| 3 Effect Enamel SI-01–03. 2.9ml   | 2 Flow Opaque Dentine            |
| 4 Transpa                         | OD-A2, A3 . . . . . 2ml          |
| TI-01, 02, 04, 05 . . . . . 2.9ml | 1 Flow Enamel EN-L . . . . . 2ml |
| 3 Neck Transpa                    | 1 Composite Primer . . . . . 3ml |
| HT-52–54. . . . . 2.9ml           | 20 Dispensing Tips               |
| 6 Flow Dentine                    | 2 Syringe Plunger                |
| A2–3,5, B2–3, HT . . . . . 2ml    | 3 Instructions for use           |

VC Gingiva Kit | 820203  
Complete gingiva colours and primers

**Livelier red aesthetics:**

The gingiva colours kit makes it easy to reproduce all areas of the gum, with a completely natural look. The porcelains are available in three viscosities (liquid, paste and gel) – for a homogeneous foundation, simple processing, mixing, and very thin layer thicknesses! The liquid opaque's greatest qualities are its extraordinary covering ability and ease of use. The paste VC gingiva materials can be used individually, mixed or in combination with other shades, while the gel modifiers are ideal for small space ratios and thin layer thicknesses, due to their viscosity.



- |  |   |
|--|---|
| 4 Gingiva Opaque<br>O-G3-6 . . . . . 2.4 ml        | 1 Gingiva Translucent<br>GT light-pink . . . . . 2.4 ml |
| 4 Gingiva G3-6 . . . . . 2.9 ml                    | 1 Metal Primer . . . . . 5 ml                           |
| 6 Gingiva Modifier<br>GM-1-3, 5-7 . . . . . 2.4 ml | 1 Composite Primer . . . . . 3 ml                       |
|  | 20 Dispensing Tips                                      |
|  | 2 Syringe Plunger                                       |
|  | 3 Instructions for use                                  |



created by Uwe Gehringer, Oral Design

VC Make up Neo Kit | 820204  
Universal stains

**Amazingly simple and varied:**

The fine-grained, nano-filled stains and modifiers allow simple and efficient colouring, for both internal and external (transparent) characterisation of the layer structures. The high-quality VC Make up Neo porcelains are also well-suited for the palatal modification of Creopal denture teeth and shells, for greater efficiency and versatility. The special nano-filler technology helps to guarantee a perfect particle distribution, resulting in a very high resistance to abrasion and colour retention – even with thin layer thicknesses. In many cases, mechanical polishing can be omitted or clearly shortened. The two translucent gel materials, Translucent h.v. (high viscosity) and l.v. (low viscosity), are suitable for mixing with the Neo colours for internal characterisation.



- |  |                                       |
|--|---------------------------------------|
| 3 Make up Neo<br>MUN-A-C . . . . . 2.6 ml        | 2 Translucent h.v., l.v. . . . 2.4 ml |
| 12 Make up Neo<br>MUN-1-4, 7-12, IL, G. . 2.6 ml | 10 Brush Round, Size 1                |
| 2 Make up Neo<br>MUN-CL, MUN-CL h.c. . 5 ml      | 10 Brush Flat, Size 1                 |
|  | 2 Brush Holder                        |
|  | 2 Instructions for use                |

VC Trial Kit A2 | 820208  
The easy introduction of the system

A colour system, a layering concept and a ceramic-like feeling with a reduced selection – matched to the most common shade A2. The high-quality 1-shade set offers dental technicians a wide spectrum for creating a natural look – even for very thin layer thicknesses. The **Flow porcelains** are a real highlight – also in combination with Creopal- and Creopal Shell-denture teeth.



- |   |                                   |
|---|-----------------------------------|
| 1 Base Opaque O-BO. . . 2.4 ml                | 1 Flow Enamel EN-L . . . . 2.9 ml |
| 1 Cervical Opaque<br>O-CO. . . . . 2.4 ml     | 1 Separator . . . . . 5 ml        |
| 1 Opaque O-A2 . . . . . 2.4 ml                | 1 Diamond Polisher . . . . . 8 g  |
| 1 Opaque Dentine<br>OD-32 . . . . . 2.9 ml    | 1 Air Protect . . . . . 10 ml     |
| 1 Dentine D-A2 . . . . . 2.9 ml               | 1 Composite Primer . . . . . 3 ml |
| 1 Enamel E-58 . . . . . 2.9 ml                | 1 Mixing Pad                      |
| 1 Make up Neo MUN-2 . . 2.6 ml                | 20 Dispensing Tips                |
| 1 Flow Dentine A2 . . . . . 2 ml              | 2 Syringe Plunger                 |
| 1 Flow Opaque Dentine<br>OD-A2 . . . . . 2 ml | 4 Instructions for use            |
|   | 1 Creation VC Workbook            |

VC Accessory Kit | 820205  
Accessories and primers

Brushes, polishing paste or a specific primer: this kit has the right accessory for every laboratory table and indication.



- |                                  |                        |
|----------------------------------|------------------------|
| 2 Syringe Plunger                | 10 Disposable Palette  |
| 1 Separator . . . . . 5ml        | 10 Brush Round, Size 1 |
| 1 Diamond Polisher . . . . . 8g  | 10 Brush Flat, Size 1  |
| 1 Air Protect . . . . . 10ml     | 1 Brush No. 7          |
| 1 Composite Primer . . . . . 3ml | 2 Brush Holder         |
| 1 Metal Primer . . . . . 5ml     | 1 Mixing Pad           |
| 1 Ceramic Primer . . . . . 3ml   | 4 Instructions for use |

VC Single Products and Bonding Agents

The right tools for a strong bond to different materials, or a long-lasting shine.



**VC Metal Primer | 820154**

Ensures secure bonding between the framework and the first opaque layer (VC Base Opaque).

**VC Ceramic Primer | 820156**

This primer's special composition makes it an important part of the adhesive bond to the first opaque layer, and subsequently, the composite bond.

**VC Composite Primer | 820155**

Light-curing primer for recreating the inhibition layer (reaction layer). Builds the bond from already polymerised material to material which has not yet been polymerised.



**VC Separator | 820151**

Composite-plaster insulation used with the working plaster model for direct contact with the composite.

**VC Air Protect | 820153**

Acid blocker which protects the inhibition layer after polymerisation, in order to maintain the surface structure. This guarantees complete polymerisation of the surface.

**VC Diamond Polisher | 820152**

Extremely fine-grained diamond polishing paste which quickly and efficiently creates a controlled shine.

The color chart displays various shades for different dental materials, categorized into several groups:

- DENTINE:** A1, A2, A3, A3,5, A4, B1, B2, B3, B4, C1, C2, C3, C4, D2, D3, D4
- ENAMEL:** E-57, E-58, E-59, E-60
- TRANSPA:** TI-01 (blue), TI-02 (white), TI-04 (yellow), TI-05 (grey)
- EFFECT ENAMEL:** SI-01 (light yellow), SI-02 (medium yellow), SI-03 (heavy yellow)
- PEARL ENAMEL:** PS-1 (blue), PS-2 (flamingo)
- NECK TRANSPA HIGH FLUORESCENT:** HT-52 (khaki), HT-53 (sand), HT-54 (honey)
- OPAQUE DENTINE:** O-BO (Base Opaque), O-CO (Cervical Opaque), OD-32 (havanna), OD-37 (curry), OD-41 (orange), OD-43 (ivory), OD-44 (cuba), Translucent Gel (light pink)
- GINGIVA:** G3 (light pink), G4 (flamingo), G5 (rose), G6 (dark pink opaque)
- GINGIVA MODIFIER:** GM1 (purple), GM2 (dark pink), GM3 (light pink), GM5 (rose), GM6 (dark pink opaque), GM7 (violet)
- GINGIVA OPAQUE:** O-G3 (light pink), O-G4 (flamingo), O-G5 (rose), O-G6 (dark pink)
- FLOW DENTINE:** FD-BW, FD-A1, FD-A2, FD-A3, FD-A3,5, FD-B1, FD-B2, FD-B3, FD-HT
- FLOW OPAQUE DENTINE:** OD-A2, OD-A3
- FLOW ENAMEL:** EN-L, EN-T
- MAKE UP NEO:** MUN-1 (white), MUN-2 (eggshell), MUN-3 (lemon yellow), MUN-4 (mandarine), MUN-7 (light brown), MUN-8 (medium brown), MUN-9 (olive), MUN-10 (red), MUN-11 (blue), MUN-12 (grey)
- Other shades:** MUN-A (stain A), MUN-B (stain B), MUN-C (stain C), MUN-IL (Illusion), MUN-G (Gingiva), MUN-CL (clear), MUN-CL (h.c.), Translucent (h.v., l.v.)

Shades A1-D4 are referring to the Vita® Shade Guide. Vita® is a registered trademark of VITA Zahnfabrik H. Rauter GmbH & Co. KG, Bad Säckingen, Germany.

## DENTURE TEETH

“Without any loss of aesthetics, the natural, slightly rectangular tooth shapes can perfectly be individualised and combined also due to the skilfully arranged interdental closing ridges.

My conclusion: Creopal teeth and shells are economic and aesthetic down to the smallest detail.”

*Michael Zangl*



### CREOPAL COMPOSITE TEETH AND SHELLS – exclusive range of denture teeth: multifaceted play of colour and shape

High aesthetics, stability and efficiency: Creopal is a modern system of composite teeth with enhanced strength – the result of intercultural exchange. Thus the gnathology and the surface texture of the anterior teeth were designed in a Willi Geller project lasting several years, while the posterior teeth were developed in parallel by Yasuhiro Odanaka, among others.

The **ten anterior and five posterior tooth shapes** for the maxilla and mandibula are perfectly coordinated with each other. Particularly impressive features are their natural morphology and surface texture as well as an extraordinary gloss. As a result of the balanced filler content, the highly compacted composite teeth display high abrasion and flexural strength.

The exclusive range of artificial teeth also includes multifunctional **composite shells for the anterior and posterior area**. These Creopal Shells, despite their extremely thin layer thickness,

achieve the same colour effect and the same brightness value as full contour teeth – creating a masterful impact!

**Individually adaptable and multiple indications:** The Creopal system is available in 16 Vita® and two bleach shades, for perfect colour adaptation with acrylic and ceramic materials, the Creopal Shell system has a limited colour range. The artificial teeth produced by a four-layer process and the Creopal Shells with a two-layer method, are suitable for partial, combination and implant restorations as well as full dentures and as a set-up or mock-up for aesthetic try-ins and backward planning. The slightly rectangular tooth shapes can be perfectly individualised and combined – without any loss of aesthetics – best with Creation VC!

**Creopal teeth and shells – for individual tooth aesthetics.**

### THE BRILLIANCE OF CREOPAL AND CREOPAL SHELL:

- System-independent, lifelike denture teeth and veneer shells made from composite
- Tooth shapes with enhanced opalescence and fluorescence – for more light dynamics
- Rectangular basic forms can easily be individualised without loss of colour
- Closed interdental spaces for a natural set-up and papilla shaping
- Universal indications in temporary restorations, partial and full dentures

**CREOPAL: SHELL AND FULL CONTOUR**

shell anterior	X	X	X	X	-		X	X	X	-		-	-	-	-	-	-	-	X
shell posterior	X	X	X	X	-		X	X	X	-		-	-	-	-	-	-	-	-
full anterior	X	X	X	X	X		X	X	X	X		X	X	X	X		X	X	X
full posterior	X	X	X	X	X		X	X	X	X		X	X	X	X		X	X	-



**Creopal Anterior**  
Fully anatomical composite anterior tooth.

**Single sets, shapes and shades**  
Creopal upper jaw anterior teeth AU, 6-piece . . . . . 1 set  
6 shapes,  
16 tooth shades A1–D4 and 2 bleach shades FW2, FW5  
  
Creopal lower jaw anterior teeth AL, 6-piece . . . . . 1 set  
4 shapes,  
16 tooth shades A1–D4 and 2 bleach shades FW2, FW5



**Creopal Posterior**  
Fully anatomical composite posterior tooth.

**Single sets, shapes and shades**  
Creopal upper jaw posterior teeth PU, 8-piece . . . . . 1 set  
4 shapes, 16 tooth shades A1–D4  
  
Creopal lower jaw posterior teeth PL, 8-piece . . . . . 1 set  
4 shapes, 16 tooth shades A1–D4



**Creopal Shell Anterior**  
Veneer composite anterior tooth.

**Single sets, shapes and shades**  
Creopal Shell upper jaw anterior teeth SAU 6-piece . . . . . 1 set  
4 shapes,  
7 tooth shades A1–3.5, B1–3 and 1 bleach shade FW5  
  
Creopal Shell lower jaw anterior teeth SAL, 6-piece . . . . . 1 set  
3 shapes,  
7 tooth shades A1–3.5, B1–3 and 1 bleach shade FW5



**Creopal Shell Posterior**  
Veneer composite posterior tooth.

**Single sets, shapes and shades**  
Creopal Shell upper jaw posterior teeth SPU, 8-piece . . . . . 1 set  
4 shapes, 7 tooth shades A1–3.5, B1–3  
  
Creopal Shell lower jaw posterior teeth SPL, 8-piece . . . . . 1 set  
4 shapes, 7 tooth shades A1–3.5, B1–3

**Creation Tooth Cabinet**

The tooth cabinet with five drawers offers enough space for up to 300 sets (60 anterior sets or 40 posterior sets per inlay). The drawer bases are made of anodised, black moulded sheet metal parts, and can be opened by lightly touching the front. Each drawer is fitted with a acrylic glass insertion plate at the front for individual labelling. Tooth cabinet without inlays and sets. 6-piece and 8-piece inlays are available individually.  
Dimensions: 44.5 x 39.8 x 19.5 cm

Creation Tooth Cabinet | 1000300030

Assortment inlay for 72 anterior sets | PEARL00003  
Assortment inlay for 48 posterior sets | PEARL00004



# 44 Creopal Denture Teeth



### Creopal Denture Tooth Presentation Boxes

High-value aluminium chests with 33 sets in all shapes and Creopal primer.

- Creopal Presentation Box . . . . . A1 | 1100000011
- Creopal Presentation Box . . . . . A2 | 1100000012
- Creopal Presentation Box . . . . . A3 | 1100000013
- Creopal Presentation Box . . . . . A3.5 | 1100000014
- Creopal Presentation Box . . . . . B2 | 1100000017
- Creopal Presentation Box . . . . . B3 | 1100000018



### Creopal Shade Guide

Tooth shade guide with 16 tooth shades A1–D4 and 2 bleach shades FW2 and FW5.

Creopal Shade Guide | 1100000001



### Creopal Primer

Bonding agent for a secure bond between prosthetic tooth and prosthetic resin.

Creopal Primer | 1200000001



Type AU – upper anterior



Type AL – lower anterior



### Contact Relationship in Statics

Flat intercuspation

Calotte: 140  
Can readily be used in a combination technique and complete prosthetics due to the anatomical shape and the cusp inclination.





**CREAPEARL 2 PMMA TEETH –  
cosmetic dentistry that works functional and looks natural**

Simply because being natural matters: the most fascinating characteristic of the Creapearl 2 anterior and posterior teeth is not only their brilliant aesthetics, but also their universal function. This means that the maximum demand for individuality can be reached. Minimal grinding on the body of the tooth also makes it easier to adjust the form of the tooth.

Thanks to the elaborate manufacturing process, high-value materials and a particularly strong dentine core, this range of anterior and posterior teeth, independent of any system, guarantees dental technicians **prosthetic teeth that are 100% true to their colour, shape and function** – adapted to the Vita® shade system.

**Creapearl 2 Anterior**

The lively colour effect of the Creapearl 2 Anterior makes it a classic anterior tooth with a wide variety of shapes. Its other distinguishing features are its **almost natural layering** with increased opalescence, fluorescence and translucence, and its lifelike surface structure.

**Creapearl 2 Posterior**

The posterior tooth has a **high level of abrasion resistance** and increased vertical stability and resilience – for a long life and resistance to plaque. Its **natural surface morphology** also makes it feel comfortable in the mouth.

The basic concept of the Creapearl 2 tooth range involves the reproduction of a natural tooth's function and character, using strengthened PMMA resin. The form follows the function, bringing the **fundamental principles of Creation** into effect:

- Raised opacity
- Chromatic dentine
- Opalescent glaze coating
- Individual high-contrast layering (coloured/white, opaque/translucent)

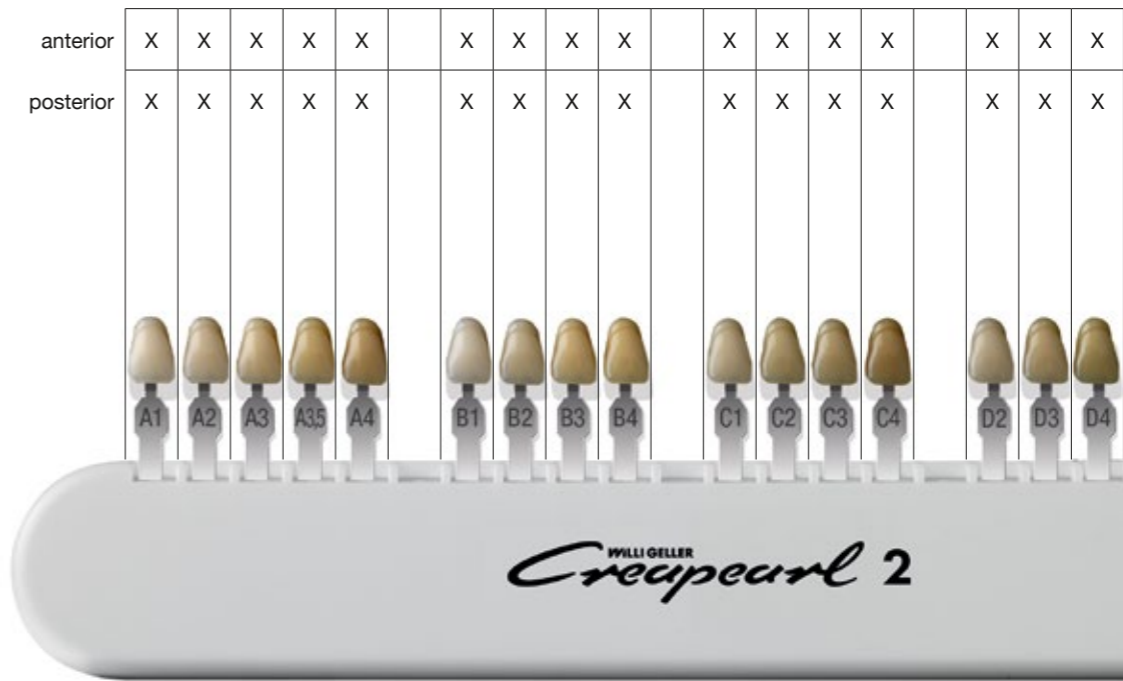
When the form and surface texture of the Creapearl 2 anterior teeth was conceived by master of ceramics Willi Geller, the MDT Dieter Schulz came up with the concept for the posterior teeth, using the occlusal compass and drawing on his great experience in NAT/NFR recovery technology. Thanks to this easy-to-understand positioning concept and the **multi-functional occlusal surface design** (with free spaces in the occlusion), all types of position and biting situations can be implemented.

**Creapearl 2: natural and functional across all our designs!**

**THE BRILLIANCE OF  
CREAPEARL 2:**

- Anterior and posterior tooth range with perfect colouring and function
- Dynamic colour penetration for a reduction without colour wearing away
- Closed approximal areas for a vital red/white aesthetic ("Geller Wing")
- More expressive and natural structure of the occlusal surface relief
- Outstanding resistance to wear and tear
- Strong, characteristic tooth shape – can be used by anyone, for anyone, and adapted to suit the individual

**CREAPEARL 2**



**Creation Tooth Cabinet**

The tooth cabinet with five drawers offers enough space for up to 300 sets (60 anterior sets or 40 posterior sets per inlay). The drawer bases are made of anodised, black moulded sheet metal parts, and can be opened by lightly touching the front. Each drawer is fitted with a acrylic glass insertion plate at the front for individual labelling. Tooth cabinet without inlays and sets. 6-piece and 8-piece inlays are available individually. Dimensions: 44.5 x 39.8 x 19.5 cm

Creation Tooth Cabinet | 1000300030

Assortment inlay for 72 anterior sets | PEARL00003  
Assortment inlay for 48 posterior sets | PEARL00004





**Creapearl 2 Denture Tooth Presentation Boxes**  
High-value aluminium chests with 33 sets in all shapes.

Creapearl 2 Presentation Box . . . . . A1 | 1000300011  
 Creapearl 2 Presentation Box . . . . . A2 | 1000300012  
 Creapearl 2 Presentation Box . . . . . A3 | 1000300013  
 Creapearl 2 Presentation Box . . . . . A3.5 | 1000300014



**Creapearl 2 Shade Guide**  
Tooth shade guide with 16 tooth shades A1–D4.

Creapearl 2 Shade Guide | 1000300009



**Creapearl 2 Anterior**  
Fully anatomical anterior tooth made from strengthened PMMA resin.

**Single sets, shapes and shades**  
 Creapearl 2 upper jaw anterior teeth A and V, 6-piece . . . . 1 set  
 10 shapes, 16 tooth shades A1–D4

Creapearl 2 lower jaw anterior teeth U, 6-piece . . . . . 1 set  
 5 shapes, 16 tooth shades A1–D4



**Creapearl 2 Posterior**  
Fully anatomical posterior tooth made from strengthened PMMA resin.

**Single sets, shapes and shades**  
 Creapearl 2 upper jaw posterior teeth D, E, F, G, 8-piece . . 1 set  
 9 shapes, 16 tooth shades A1–D4

Creapearl 2 lower jaw posterior teeth D, E, F, G, 8-piece . . 1 set  
 9 shapes, 16 tooth shades A1–D4

Technical specifications	Dynamicline (D)	Balanceline (E, F)	Gnathosline (G)
Dimensions	S, M, L	S, M	S, M
Morphology	Constructional morphology (NAT)	Extended functional morphology (NFR)	Natural shape and cusp inclination

Constructional morphology (NAT), extended functional morphology (NFR), MDT Dieter Schulz



**Type A Anatomic – upper anterior teeth with natural root-shaped emergence profile**  
 The denture tooth is a perfect anatomical copy of a natural tooth.



**Type V Vario – upper anterior teeth for individual contouring**  
 The clinical tooth crown can be modified for an individual appearance, with or without grinding down the tooth neck, thanks to the model of the gingival edge.



**Type U – lower anterior teeth**  
 Can be arranged in the same way as Type V Vario, without affecting the anatomical circumstances. In this way, the length of the tooth itself can be determined.



**Dynamicline**  
 Calotte: 140  
 Condyle inclination (HCN) FH 45° / CE 30°  
 Bennett angle 10°, ISS 0.5mm  
 Lateroretrusion (LRT) 20°  
 Retrusion (RT) 0.5mm



**Balanceline E**  
 Calotte: 140  
 Condyle inclination (HCN) FH 30° / CE 15°  
 Bennett angle 10°, ISS 1.0mm  
 Lateroretrusion (LRT) 20°  
 Retrusion (RT) 1.0mm



**Balanceline F**  
 Basal reduced  
 Calotte: 140  
 Condyle inclination (HCN) FH 30° / CE 15°  
 Bennett angle 10°, ISS 1.0mm  
 Lateroretrusion (LRT) 20°  
 Retrusion (RT) 1.0mm



**Gnathosline G / Willi Geller**  
 Calotte: 140  
 Due to the natural shape and the cusp inclination, the denture teeth can be used for partial, combined and full denture restorations.



WILLI GELLER  
*Creation*  
SIMPLY BRILLIANT

Creapearl 2

WILLI GELLER  
*Creation*  
SIMPLY BRILLIANT

**CONTENT**

**CREATION CERAMICS AND ACCESSORIES**

All kits at a glance ..... 3

CC - Classic Metal Ceramic ..... 4

ZI-CT - Zirconium Dioxide Ceramic ..... 13

ZI-F - Low-Fusing Zirconium Dioxide Ceramic ..... 17

LS/LS Press - Lithium Disilicate  
Veneering and Pressable Ceramic ..... 21

CreaColor – Stains und Modifiers ..... 23

Creation Liquids ..... 24

Ceramic Accessories ..... 24

Creation Shade Guides ..... 25

Aqualine ..... 26

**CREATION COMPOSITE**

VC - Light-Curing Composite ..... 27

**CREATION DENTURE TEETH**

Creopal ..... 31

Creapearl 2 ..... 41

Printing errors excepted. Subject to change at any time. The general terms and conditions of Creation Willi Geller International GmbH apply ([www.creation-willigeller.com](http://www.creation-willigeller.com))

Shades A1–D4 are referring to the Vita® Shade Guide. Vita® is a registered trademark of VITA Zahnfabrik H. Rauter GmbH & Co. KG, Bad Säckingen, Germany.

Article no.	Article name	Content
<b>CERAMIC</b>		
000300	CC/Kit Creapast	1 Kit
000800	CC/Powder Opaque Kit (inkl. Shade Guide 000068)	1 Kit
000804	CC/Kit 1 804 (inkl. Shade Guide 000064)	1 Kit
001508	CC/Kit 2 1508 (inkl. Shade Guide 000073)	1 Kit
000915	CC/Starter Kit	1 Kit
000920	CC/Introduction Kit	1 Kit
001590	CC/Gingiva Kit (inkl. Shade Guide 000048)	1 Kit
000250	CC/Bleach Shades Kit (inkl. Shade Guide 000049)	1 Kit
001503	CC/Shoulder Kit (inkl. Shade Guide 000047)	1 Kit
000801	CC/Kit 1 Transition Dentine (inkl. Shade Guide 000087)	1 Kit
620501	ZI-CT/Kit 1	1 Kit
620502	ZI-CT/Kit 2	1 Kit
620503	ZI-CT/Starter Kit	1 Kit
620506	ZI-CT/Introduction Kit	1 Kit
620504	ZI-CT/Gingiva Kit	1 Kit
620505	ZI-CT/Bleach Kit	1 Kit
620507	ZI-CT/Shoulder Kit	1 Kit
653010	ZI-F/Kit 1 (inkl. Shade Guide 000076)	1 Kit
653015	ZI-F/Kit 2 (inkl. Shade Guide 000077)	1 Kit
653025	ZI-F/Starter Kit	1 Kit
653030	ZI-F/Introduction Kit	1 Kit
603030	ZI-F/Gingiva Kit (inkl. Shade Guide 000048)	1 Kit
652050	ZI-F/Bleach Shades Kit (inkl. Shade Guide 000049)	1 Kit
830080	LS Press / Starter Kit	1 Kit
830081	LS Press / Introduction Kit A1, A2	1 Kit
830082	LS Press / Introduction Kit A3	1 Kit
830083	LS/Kit	1 Kit
001200	CreaColor Kit	1 Kit
001100	Make Up Neo Kit	1 Kit
001150	In Nova Neo Kit	1 Kit
<b>COMPOSITE</b>		
820201	VC/Kit 1	1 Kit
820202	VC/Kit 2	1 Kit
820203	VC/Gingiva Kit	1 Kit
820204	VC/Make up Neo Kit	1 Kit
820205	VC/Accessory-Kit	1 Kit
820206	VC/Kit 1 Starter	1 Kit
820207	VC/Kit 2 Starter	1 Kit
820208	VC/Trial Kit	1 Kit

Article no.	Article name	Content
	<b>PASTES 3 g – 18 g</b>	
000080	CC.LF/Crea Alloy Bond	2 x 4 g
000301	CC/Creapast A1	3 g
000302	CC/Creapast A2	3 g
000303	CC/Creapast A3	3 g
000304	CC/Creapast A3,5	3 g
000305	CC/Creapast A4	3 g
000306	CC/Creapast B1	3 g
000307	CC/Creapast B2	3 g
000308	CC/Creapast B3	3 g
000309	CC/Creapast B4	3 g
000310	CC/Creapast C1	3 g
000311	CC/Creapast C2	3 g
000312	CC/Creapast C3	3 g
000313	CC/Creapast C4	3 g
000314	CC/Creapast D2	3 g
000315	CC/Creapast D3	3 g
000316	CC/Creapast D4	3 g
000317	CC/Creapast IO white	3 g
000318	CC/Creapast IO violet	3 g
000319	CC/Creapast IO ochre	3 g
000320	CC/Creapast IO gold yellow	3 g
000322	CC/Creapast WOP sand	3 g
000323	CC/Creapast WOP sahara	3 g
000324	CC/Creapast WOP gold	3 g
000325	CC/Creapast G gingiva	3 g
000326	CC/Bleach Creapast O-AB	3 g
006301	CC/Creapast A1	18 g
006302	CC/Creapast A2	18 g
006303	CC/Creapast A3	18 g
006304	CC/Creapast A3,5	18 g
006305	CC/Creapast A4	18 g
006306	CC/Creapast B1	18 g
006307	CC/Creapast B2	18 g
006308	CC/Creapast B3	18 g
006309	CC/Creapast B4	18 g
006310	CC/Creapast C1	18 g
006311	CC/Creapast C2	18 g
006312	CC/Creapast C3	18 g
006313	CC/Creapast C4	18 g
006314	CC/Creapast D2	18 g
006315	CC/Creapast D3	18 g
006316	CC/Creapast D4	18 g
006317	CC/Creapast IO white	18 g
006318	CC/Creapast IO violet	18 g
006319	CC/Creapast IO ochre	18 g
006320	CC/Creapast IO gold yellow	18 g
006322	CC/Creapast WOP sand	18 g

Article no.	Article name	Content
006323	CC/Creapast WOP sahara	18 g
006324	CC/Creapast WOP gold	18 g
006325	CC/Creapast G gingiva	18 g
006326	CC/Bleach Creapast O-AB	18 g
	<b>PORCELAIN 10 g – 15 g</b>	
000174	CC/Glaze GL	10 g
001511	CC/Opaque Modifier OM-11 white	15 g
001512	CC/Opaque Modifier OM-12 pink	15 g
001513	CC/Opaque Modifier OM-13 lilac	15 g
001514	CC/Opaque Modifier OM-14 grey	15 g
001515	CC/Opaque Modifier OM-15 sahara	15 g
001516	CC/Opaque Modifier OM-16 ocker	15 g
001517	CC/Opaque Modifier OM-17 brown	15 g
001518	CC/Opaque Modifier OM-G gingiva	15 g
001521	CC/Shoulder SP-21 neutral	15 g
001522	CC/Shoulder SP-22 flamingo	15 g
001523	CC/Shoulder SP-23 sand	15 g
001524	CC/Shoulder SP-24 gold	15 g
001525	CC/Shoulder SP-25 red brown	15 g
001526	CC/Shoulder SP-26 yellow grey	15 g
001527	CC/Shoulder SP-27 ivory	15 g
001528	CC/Shoulder SP-28 opaque yellow	15 g
001529	CC/Shoulder SP-29 honey	15 g
001530	CC/Shoulder SP-G gingiva	15 g
000256	CC/Bleach Shoulder SP-AB	15 g
001532	CC/Opaque Dentine OD-32 (A2-A3)	15 g
001537	CC/Opaque Dentine OD-37 (B4)	15 g
001541	CC/Opaque Dentine OD-41 (D3)	15 g
001543	CC/Opaque Dentine OD-43 (ivory)	15 g
001544	CC/Opaque Dentine OD-44 (cuba)	15 g
001551	CC/Neck Transpa HT-51 iridescent	15 g
001552	CC/Neck Transpa HT-52 khaki	15 g
001553	CC/Neck Transpa HT-53 sand	15 g
001554	CC/Neck Transpa HT-54 honey	15 g
001555	CC/Neck Transpa HT-55 bordeaux	15 g
001556	CC/Neck Transpa HT-56 ochre	15 g
001561	CC/Make In MI-61 ivory	15 g
001562	CC/Make In MI-62 lemon	15 g
001563	CC/Make In MI-63 honey	15 g
001564	CC/Make In MI-64 flamingo	15 g
001565	CC/Make In MI-65 gold	15 g
001566	CC/Make In MI-66 olive	15 g
001568	CC/Approximal Dentine AD-1 light yellow	15 g
001569	CC/Approximal Dentine AD-2 orange	15 g
001570	CC/Opaque Dentine OD-A1	15 g
001571	CC/Opaque Dentine OD-A2	15 g
001572	CC/Opaque Dentine OD-A3	15 g

Article no.	Article name	Content
001573	CC/Opaque Dentine OD-A3,5	15 g
001574	CC/Opaque Dentine OD-A4	15 g
001575	CC/Opaque Dentine OD-B1	15 g
001576	CC/Opaque Dentine OD-B2	15 g
001577	CC/Opaque Dentine OD-B3	15 g
001578	CC/Opaque Dentine OD-B4	15 g
001579	CC/Opaque Dentine OD-C1	15 g
001580	CC/Opaque Dentine OD-C2	15 g
001581	CC/Opaque Dentine OD-C3	15 g
001582	CC/Opaque Dentine OD-C4	15 g
001583	CC/Opaque Dentine OD-D2	15 g
001584	CC/Opaque Dentine OD-D3	15 g
001585	CC/Opaque Dentine OD-D4	15 g
001591	CC/Gingiva G1 purple	15 g
001592	CC/Gingiva G2 dark pink	15 g
001593	CC/Gingiva G3 light pink	15 g
001594	CC/Gingiva G4 flamingo	15 g
001595	CC/Gingiva G5 rose	15 g
001596	CC/Gingiva G6 dark pink opaque	15 g
001597	CC/Gingiva GN neutral	15 g
001598	CC/Gingiva G7 violet	15 g
	<b>PORCELAIN 20 g</b>	
000201	CC/Opaque O-A1	20 g
000202	CC/Opaque O-A2	20 g
000203	CC/Opaque O-A3	20 g
000204	CC/Opaque O-A3,5	20 g
000205	CC/Opaque O-A4	20 g
000206	CC/Opaque O-B1	20 g
000207	CC/Opaque O-B2	20 g
000208	CC/Opaque O-B3	20 g
000209	CC/Opaque O-B4	20 g
000210	CC/Opaque O-C1	20 g
000211	CC/Opaque O-C2	20 g
000212	CC/Opaque O-C3	20 g
000213	CC/Opaque O-C4	20 g
000214	CC/Opaque O-D2	20 g
000215	CC/Opaque O-D3	20 g
000216	CC/Opaque O-D4	20 g
000217	CC/Opaque FOP	20 g
000231	CC/Dentine D-A1	20 g
000232	CC/Dentine D-A2	20 g
000233	CC/Dentine D-A3	20 g
000234	CC/Dentine D-A3,5	20 g
000235	CC/Dentine D-A4	20 g
000236	CC/Dentine D-B1	20 g
000237	CC/Dentine D-B2	20 g
000238	CC/Dentine D-B3	20 g

Article no.	Article name	Content
000239	CC/Dentine D-B4	20 g
000240	CC/Dentine D-C1	20 g
000241	CC/Dentine D-C2	20 g
000242	CC/Dentine D-C3	20 g
000243	CC/Dentine D-C4	20 g
000244	CC/Dentine D-D2	20 g
000245	CC/Dentine D-D3	20 g
000246	CC/Dentine D-D4	20 g
000247	CC/Dentine D-CW California white	20 g
000251	CC/Bleach Opaque O-AB	20 g
000252	CC/Bleach Dentine BD-A	20 g
000253	CC/Bleach Dentine BD-B	20 g
000254	CC/Bleach Dentine BD-B0	20 g
000255	CC/Bleach Enamel S-AB	20 g
000261	CC/Enamel S-057	20 g
000262	CC/Enamel S-058	20 g
000263	CC/Enamel S-059	20 g
000264	CC/Enamel S-060	20 g
000265	CC/Effect Enamel SI-01 light yellow	20 g
000266	CC/Effect Enamel SI-02 medium yellow	20 g
000267	CC/Effect Enamel SI-03 heavy yellow	20 g
000268	CC/Effect Enamel SI-04 light orange	20 g
000269	CC/Effect Enamel SI-05 medium orange	20 g
000270	CC/Effect Enamel SI-06 heavy orange	20 g
000271	CC/Window UC	20 g
000272	CC/Transpa NT neutral	20 g
000273	CC/Clear CL-O	20 g
000274	CC/Glaze GL	20 g
000275	CC/Transpa OT opal	20 g
000276	CC/Transpa TI-1 blue	20 g
000277	CC/Transpa TI-2 white	20 g
000278	CC/Transpa TI-3 pink	20 g
000279	CC/Transpa TI-4 yellow	20 g
000280	CC/Transpa TI-5 grey	20 g
000281	CC/Pearl Enamel PS-0 white	20 g
000282	CC/Pearl Enamel PS-1 blue/white	20 g
000283	CC/Pearl Enamel PS-2 flamingo	20 g
000284	CC/Pearl Enamel PS-3 orange	20 g
000285	CC/Effect Enamel SO-10 blue	20 g
000286	CC/Effect Enamel SO-11 orange	20 g
000290	CC/Correction Powder KM	20 g
003201	CC/Transition Dentine TD-A1	20 g
003202	CC/Transition Dentine TD-A2	20 g
003203	CC/Transition Dentine TD-A3	20 g
003204	CC/Transition Dentine TD-A3,5	20 g
003205	CC/Transition Dentine TD-A4	20 g
003206	CC/Transition Dentine TD-B1	20 g
003207	CC/Transition Dentine TD-B2	20 g

Article no.	Article name	Content
003208	CC/Transition Dentine TD-B3	20 g
003209	CC/Transition Dentine TD-B4	20 g
003210	CC/Transition Dentine TD-C1	20 g
003211	CC/Transition Dentine TD-C2	20 g
003212	CC/Transition Dentine TD-C3	20 g
003213	CC/Transition Dentine TD-C4	20 g
003214	CC/Transition Dentine TD-D2	20 g
003215	CC/Transition Dentine TD-D3	20 g
003216	CC/Transition Dentine TD-D4	20 g
003217	CC/Transition Dentine TD-BA	20 g
	<b>PORCELAIN 50 g</b>	
000501	CC/Opaque O-A1	50 g
000502	CC/Opaque O-A2	50 g
000503	CC/Opaque O-A3	50 g
000504	CC/Opaque O-A3,5	50 g
000505	CC/Opaque O-A4	50 g
000506	CC/Opaque O-B1	50 g
000507	CC/Opaque O-B2	50 g
000508	CC/Opaque O-B3	50 g
000509	CC/Opaque O-B4	50 g
000510	CC/Opaque O-C1	50 g
000511	CC/Opaque O-C2	50 g
000512	CC/Opaque O-C3	50 g
000513	CC/Opaque O-C4	50 g
000514	CC/Opaque O-D2	50 g
000515	CC/Opaque O-D3	50 g
000516	CC/Opaque O-D4	50 g
000517	CC/Opaque O-FOP	50 g
000531	CC/Dentine D-A1	50 g
000532	CC/Dentine D-A2	50 g
000533	CC/Dentine D-A3	50 g
000534	CC/Dentine D-A3,5	50 g
000535	CC/Dentine D-A4	50 g
000536	CC/Dentine D-B1	50 g
000537	CC/Dentine D-B2	50 g
000538	CC/Dentine D-B3	50 g
000539	CC/Dentine D-B4	50 g
000540	CC/Dentine D-C1	50 g
000541	CC/Dentine D-C2	50 g
000542	CC/Dentine D-C3	50 g
000543	CC/Dentine D-C4	50 g
000544	CC/Dentine D-D2	50 g
000545	CC/Dentine D-D3	50 g
000546	CC/Dentine D-D4	50 g
000547	CC/Dentine D-CW California white	50 g
000551	CC/Bleach Opaque O-AB	50 g
000552	CC/Bleach Dentine BD-A	50 g

Article no.	Article name	Content
000553	CC/Bleach Dentine BD-B	50 g
000554	CC/Bleach Dentine BD-B0	50 g
000555	CC/Bleach Enamel S-AB	50 g
000556	CC/Bleach Shoulder SP-AB	50 g
000561	CC/Enamel S-057	50 g
000562	CC/Enamel S-058	50 g
000563	CC/Enamel S-059	50 g
000564	CC/Enamel S-060	50 g
000565	CC/Effect Enamel SI-01 light yellow	50 g
000566	CC/Effect Enamel SI-02 medium yellow	50 g
000567	CC/Effect Enamel SI-03 heavy yellow	50 g
000568	CC/Effect Enamel SI-04 light orange	50 g
000569	CC/Effect Enamel SI-05 medium orange	50 g
000570	CC/Effect Enamel SI-06 heavy orange	50 g
000571	CC/Window UC	50 g
000572	CC/Transpa NT neutral	50 g
000573	CC/Clear CL-O	50 g
000575	CC/Transpa OT opal	50 g
000576	CC/Transpa TI-1 blue	50 g
000577	CC/Transpa TI-2 white	50 g
000578	CC/Transpa TI-3 pink	50 g
000579	CC/Transpa TI-4 yellow	50 g
000580	CC/Transpa TI-5 grey	50 g
000581	CC/Pearl Enamel PS-0 white	50 g
000582	CC/Pearl Enamel PS-1 blue/white	50 g
000583	CC/Pearl Enamel PS-2 flamingo	50 g
000584	CC/Pearl Enamel PS-3 orange	50 g
000585	CC/Effect Enamel SO-10 blue	50 g
000586	CC/Effect Enamel SO-11 orange	50 g
003501	CC/Transition Dentine TD-A1	50 g
003502	CC/Transition Dentine TD-A2	50 g
003503	CC/Transition Dentine TD-A3	50 g
003504	CC/Transition Dentine TD-A3,5	50 g
003505	CC/Transition Dentine TD-A4	50 g
003506	CC/Transition Dentine TD-B1	50 g
003507	CC/Transition Dentine TD-B2	50 g
003508	CC/Transition Dentine TD-B3	50 g
003509	CC/Transition Dentine TD-B4	50 g
003510	CC/Transition Dentine TD-C1	50 g
003511	CC/Transition Dentine TD-C2	50 g
003512	CC/Transition Dentine TD-C3	50 g
003513	CC/Transition Dentine TD-C4	50 g
003514	CC/Transition Dentine TD-D2	50 g
003515	CC/Transition Dentine TD-D3	50 g
003516	CC/Transition Dentine TD-D4	50 g
003517	CC/Transition Dentine TD-BA	50 g
005011	CC/Opaque Modifier OM-11 white	50 g
005012	CC/Opaque Modifier OM-12 pink	50 g

Article no.	Article name	Content
005013	CC/Opaque Modifier OM-13 lilac	50 g
005014	CC/Opaque Modifier OM-14 grey	50 g
005015	CC/Opaque Modifier OM-15 sahara	50 g
005016	CC/Opaque Modifier OM-16 ocker	50 g
005017	CC/Opaque Modifier OM-17 brown	50 g
005018	CC/Opaque Modifier OM-G gingiva	50 g
005021	CC/Shoulder SP-21 neutral	50 g
005022	CC/Shoulder SP-22 flamingo	50 g
005023	CC/Shoulder SP-23 sand	50 g
005024	CC/Shoulder SP-24 gold	50 g
005025	CC/Shoulder SP-25 red brown	50 g
005026	CC/Shoulder SP-26 yellow grey	50 g
005027	CC/Shoulder SP-27 ivory	50 g
005028	CC/Shoulder SP-28 opaque yellow	50 g
005029	CC/Shoulder SP-29 honey	50 g
005030	CC/Shoulder SP-G gingiva	50 g
005032	CC /Opaque Dentine OD-32 (A2-A3)	50 g
005037	CC /Opaque Dentine OD-37 (B4)	50 g
005041	CC /Opaque Dentine OD-41 (D3)	50 g
005043	CC /Opaque Dentine OD-43 (ivory)	50 g
005044	CC /Opaque Dentine OD-44 (cuba)	50 g
005051	CC /Neck Transpa HT-51 iridescent	50 g
005052	CC/Neck Transpa HT-52 khaki	50 g
005053	CC/Neck Transpa HT-53 sand	50 g
005054	CC/Neck Transpa HT-54 honey	50 g
005055	CC/Neck Transpa HT-55 bordeaux	50 g
005056	CC/Neck Transpa HT-56 ochre	50 g
005061	CC/Make In MI-61 ivory	50 g
005062	CC/Make In MI-62 lemon	50 g
005063	CC/Make In MI-63 honey	50 g
005064	CC/Make In MI-64 flamingo	50 g
005065	CC/Make In MI-65 gold	50 g
005066	CC/Make In MI-66 olive	50 g
005068	CC/Approximal Dentine AD-1 light yellow	50 g
005069	CC/Approximal Dentine AD-2 orange	50 g
005070	CC/Opaque Dentine OD-A1	50 g
005071	CC/Opaque Dentine OD-A2	50 g
005072	CC/Opaque Dentine OD-A3	50 g
005073	CC/Opaque Dentine OD-A3,5	50 g
005074	CC/Opaque Dentine OD-A4	50 g
005075	CC/Opaque Dentine OD-B1	50 g
005076	CC/Opaque Dentine OD-B2	50 g
005077	CC/Opaque Dentine OD-B3	50 g
005078	CC/Opaque Dentine OD-B4	50 g
005079	CC/Opaque Dentine OD-C1	50 g
005080	CC/Opaque Dentine OD-C2	50 g
005081	CC/Opaque Dentine OD-C3	50 g
005082	CC/Opaque Dentine OD-C4	50 g

Article no.	Article name	Content
005083	CC/Opaque Dentine OD-D2	50 g
005084	CC/Opaque Dentine OD-D3	50 g
005085	CC/Opaque Dentine OD-D4	50 g
005591	CC/Gingiva G1 purple	50 g
005592	CC/Gingiva G2 dark pink	50 g
005593	CC/Gingiva G3 light pink	50 g
005594	CC/Gingiva G4 flamingo	50 g
005595	CC/Gingiva G5 rose	50 g
005596	CC/Gingiva G6 dark pink opaque	50 g
005597	CC/Gingiva GN neutral	50 g
005598	CC/Gingiva G7 violet	50 g
	<b>PORCELAIN 250 g</b>	
002501	CC/Opaque O-A1	250 g
002502	CC/Opaque O-A2	250 g
002503	CC/Opaque O-A3	250 g
002504	CC/Opaque O-A3,5	250 g
002505	CC/Opaque O-A4	250 g
002506	CC/Opaque O-B1	250 g
002507	CC/Opaque O-B2	250 g
002508	CC/Opaque O-B3	250 g
002509	CC/Opaque O-B4	250 g
002510	CC/Opaque O-C1	250 g
002511	CC/Opaque O-C2	250 g
002512	CC/Opaque O-C3	250 g
002513	CC/Opaque O-C4	250 g
002514	CC/Opaque O-D2	250 g
002515	CC/Opaque O-D3	250 g
002516	CC/Opaque O-D4	250 g
002531	CC/Dentine D-A1	250 g
002532	CC/Dentine D-A2	250 g
002533	CC/Dentine D-A3	250 g
002534	CC/Dentine D-A3,5	250 g
002535	CC/Dentine D-A4	250 g
002536	CC/Dentine D-B1	250 g
002537	CC/Dentine D-B2	250 g
002538	CC/Dentine D-B3	250 g
002539	CC/Dentine D-B4	250 g
002540	CC/Dentine D-C1	250 g
002541	CC/Dentine D-C2	250 g
002542	CC/Dentine D-C3	250 g
002543	CC/Dentine D-C4	250 g
002544	CC/Dentine D-D2	250 g
002545	CC/Dentine D-D3	250 g
002546	CC/Dentine D-D4	250 g
002547	CC/California white	250 g
002561	CC/Enamel S-057	250 g
002562	CC/Enamel S-058	250 g

CREATION CC | CLASSIC METAL CERAMIC

Article no.	Article name	Content
002563	CC/Enamel S-059	250 g
002564	CC/Enamel S-060	250 g
002565	CC/Effect Enamel SI-01 light yellow	250 g
002566	CC/Effect Enamel SI-02 medium yellow	250 g
002567	CC/Effect Enamel SI-03 heavy yellow	250 g
002568	CC/Effect Enamel SI-04 light orange	250 g
002569	CC/Effect Enamel SI-05 medium orange	250 g
002570	CC/Effect Enamel SI-06 heavy orange	250 g
002572	CC/Transpa NT neutral	250 g
002573	CC/Clear CL-O	250 g
002575	CC/Transpa OT opal	250 g
002576	CC/Transpa TI-1 blue	250 g
002577	CC/Transpa TI-2 white	250 g
002578	CC/Transpa TI-3 pink	250 g
002579	CC/Transpa TI-4 yellow	250 g
002580	CC/Transpa TI-5 grey	250 g
002581	CC/Pearl Enamel PS-0 white	250 g
002582	CC/Pearl Enamel PS-1 blue/white	250 g
002583	CC/Pearl Enamel PS-2 flamingo	250 g
002584	CC/Pearl Enamel PS-3 orange	250 g
025071	CC/Opaque Dentine OD-A2	250 g
025072	CC/Opaque Dentine OD-A3	250 g
025073	CC/Opaque Dentine OD-A3,5	250 g
025076	CC/Opaque Dentine OD-B2	250 g
025077	CC/Opaque Dentine OD-B3	250 g
<b>LIQUIDS</b>		
000012	Modelling Liquid high-fusing ML-H	25 ml
000013	Modelling Liquid high-fusing ML-H	50 ml
000014	Modelling Liquid high-fusing ML-H	250 ml
000015	Modelling Liquid high-fusing ML-H	1000 ml
000019	Opaque Liquid high-fusing OL-H	25 ml
000020	Opaque Liquid high-fusing OL-H	50 ml
000021	Opaque Liquid high-fusing OL-H	250 ml
000010	Universal & Glaze Liquid UF/GL	25 ml
000011	Universal & Glaze Liquid UF/GL	50 ml
000025	Shoulder Liquid SPL	25 ml
000026	Shoulder Liquid SPL	50 ml
000090	Moisturing Fluid	25 ml

CREATION ZI-CT | ZIRCONIUM DIOXIDE CERAMIC

Article no.	Article name	Content
<b>PORCELAIN 4 g – 15 g</b>		
620061	ZI-CT/Frame Shade NT	4 g
620074	ZI-CT/Glaze GL	10 g
620101	ZI-CT/Gingiva G1 purple	15 g
620102	ZI-CT/Gingiva G2 dark pink	15 g
620103	ZI-CT/Gingiva G3 light pink	15 g
620104	ZI-CT/Gingiva G4 flamingo	15 g
620105	ZI-CT/Gingiva G5 rose	15 g
620106	ZI-CT/Gingiva G6 dark pink opaque	15 g
620107	ZI-CT/Gingiva G7 violet	15 g
620108	ZI-CT/Gingiva GN neutral	15 g
620120	ZI-CT/Shoulder SP-AB	15 g
620121	ZI-CT/Shoulder SP-21 neutral	15 g
620122	ZI-CT/Shoulder SP-22 flamingo	15 g
620123	ZI-CT/Shoulder SP-23 sand	15 g
620124	ZI-CT/Shoulder SP-24 gold	15 g
620125	ZI-CT/Shoulder SP-25 red brown	15 g
620126	ZI-CT/Shoulder SP-26 yellow grey	15 g
620127	ZI-CT/Shoulder SP-27 ivory	15 g
620128	ZI-CT/Shoulder SP-28 opaque yellow	15 g
620129	ZI-CT/Shoulder SP-29 honey	15 g
620131	ZI-CT/Opaque Dentine OD-32 havanna	15 g
620132	ZI-CT/Opaque Dentine OD-37 curry	15 g
620133	ZI-CT/Opaque Dentine OD-41 orange	15 g
620134	ZI-CT/Opaque Dentine OD-43 ivory	15 g
620135	ZI-CT/Opaque Dentine OD-44 cuba	15 g
620146	ZI-CT/Approximal Dentine AD-1 light yellow	15 g
620147	ZI-CT/Approximal Dentine AD-2 orange	15 g
620151	ZI-CT/Neck Transpa HT-51 iridescent	15 g
620152	ZI-CT/Neck Transpa HT-52 kaki	15 g
620153	ZI-CT/Neck Transpa HT-53 sand	15 g
620154	ZI-CT/Neck Transpa HT-54 honey	15 g
620155	ZI-CT/Neck Transpa HT-55 bordeaux	15 g
620156	ZI-CT/Neck Transpa HT-56 ochre	15 g
620161	ZI-CT/Make In MI-61 ivory	15 g
620162	ZI-CT/Make In MI-62 lemon	15 g
620163	ZI-CT/Make In MI-63 honey	15 g
620164	ZI-CT/Make In MI-64 flamingo	15 g
620165	ZI-CT/Make In MI-65 gold	15 g
620166	ZI-CT/Make In MI-66 olive	15 g
<b>PORCELAIN 20 g</b>		
620001	ZI-CT/Dentine D-A1	20 g
620002	ZI-CT/Dentine D-A2	20 g
620003	ZI-CT/Dentine D-A3	20 g
620004	ZI-CT/Dentine D-A3,5	20 g
620005	ZI-CT/Dentine D-A4	20 g
620006	ZI-CT/Dentine D-B1	20 g



CREATION ZI-CT | ZIRCONIUM DIOXIDE CERAMIC

Article no.	Article name	Content
620007	ZI-CT/Dentine D-B2	20 g
620008	ZI-CT/Dentine D-B3	20 g
620009	ZI-CT/Dentine D-B4	20 g
620010	ZI-CT/Dentine D-C1	20 g
620011	ZI-CT/Dentine D-C2	20 g
620012	ZI-CT/Dentine D-C3	20 g
620013	ZI-CT/Dentine D-C4	20 g
620014	ZI-CT/Dentine D-D2	20 g
620015	ZI-CT/Dentine D-D3	20 g
620016	ZI-CT/Dentine D-D4	20 g
620017	ZI-CT/Enamel E-57	20 g
620018	ZI-CT/Enamel E-58	20 g
620019	ZI-CT/Enamel E-59	20 g
620020	ZI-CT/Enamel E-60	20 g
620021	ZI-CT/Clear CL-O	20 g
620022	ZI-CT/Window UC	20 g
620023	ZI-CT/Bleach Dentine BD-A	20 g
620024	ZI-CT/Bleach Dentine BD-B	20 g
620025	ZI-CT/Bleach Dentine BD-B0	20 g
620026	ZI-CT/Bleach Enamel S-AB	20 g
620031	ZI-CT/Effect Enamel SI-01 light yellow	20 g
620032	ZI-CT/Effect Enamel SI-02 medium yellow	20 g
620033	ZI-CT/Effect Enamel SI-03 heavy yellow	20 g
620034	ZI-CT/Effect Enamel SI-04 light orange	20 g
620035	ZI-CT/Effect Enamel SI-05 medium orange	20 g
620036	ZI-CT/Effect Enamel SI-06 heavy orange	20 g
620037	ZI-CT/Effect Enamel SO-10 blue	20 g
620038	ZI-CT/Effect Enamel SO-11 orange	20 g
620039	ZI-CT/Transpa NT neutral	20 g
620040	ZI-CT/Transpa OT opal	20 g
620041	ZI-CT/Transpa TI-1 blue	20 g
620042	ZI-CT/Transpa TI-2 white	20 g
620043	ZI-CT/Transpa TI-3 pink	20 g
620044	ZI-CT/Transpa TI-4 yellow	20 g
620045	ZI-CT/Transpa TI-5 grey	20 g
620050	ZI-CT/Pearl Enamel PS-0 white	20 g
620051	ZI-CT/Pearl Enamel PS-1 blue/white	20 g
620052	ZI-CT/Pearl Enamel PS-2 flamingo	20 g
620053	ZI-CT/Pearl Enamel PS-3 orange	20 g
620060	ZI-CT/Correction Powder KM	20 g
	<b>PORCELAIN 50 g</b>	
620201	ZI-CT/Dentine D-A1	50 g
620202	ZI-CT/Dentine D-A2	50 g
620203	ZI-CT/Dentine D-A3	50 g
620204	ZI-CT/Dentine D-A3,5	50 g
620205	ZI-CT/Dentine D-A4	50 g
620206	ZI-CT/Dentine D-B1	50 g

CREATION ZI-CT | ZIRCONIUM DIOXIDE CERAMIC

Article no.	Article name	Content
620207	ZI-CT/Dentine D-B2	50 g
620208	ZI-CT/Dentine D-B3	50 g
620209	ZI-CT/Dentine D-B4	50 g
620210	ZI-CT/Dentine D-C1	50 g
620211	ZI-CT/Dentine D-C2	50 g
620212	ZI-CT/Dentine D-C3	50 g
620213	ZI-CT/Dentine D-C4	50 g
620214	ZI-CT/Dentine D-D2	50 g
620215	ZI-CT/Dentine D-D3	50 g
620216	ZI-CT/Dentine D-D4	50 g
620217	ZI-CT/Enamel E-57	50 g
620218	ZI-CT/Enamel E-58	50 g
620219	ZI-CT/Enamel E-59	50 g
620220	ZI-CT/Enamel E-60	50 g
620221	ZI-CT/Clear CL-O	50 g
620222	ZI-CT/Window UC	50 g
620223	ZI-CT/Bleach Dentine BD-A	50 g
620224	ZI-CT/Bleach Dentine BD-B	50 g
620225	ZI-CT/Bleach Dentine BD-B0	50 g
620226	ZI-CT/Bleach Enamel S-AB	50 g
620231	ZI-CT/Effect Enamel SI-01 light yellow	50 g
620232	ZI-CT/Effect Enamel SI-02 medium yellow	50 g
620233	ZI-CT/Effect Enamel SI-03 heavy yellow	50 g
620234	ZI-CT/Effect Enamel SI-04 light orange	50 g
620235	ZI-CT/Effect Enamel SI-05 medium orange	50 g
620236	ZI-CT/Effect Enamel SI-06 heavy orange	50 g
620237	ZI-CT/Effect Enamel SO-10 blue	50 g
620238	ZI-CT/Effect Enamel SO-11 orange	50 g
620239	ZI-CT/Transpa NT neutral	50 g
620240	ZI-CT/Transpa OT opal	50 g
620241	ZI-CT/Transpa TI-1 blue	50 g
620242	ZI-CT/Transpa TI-2 white	50 g
620243	ZI-CT/Transpa TI-3 pink	50 g
620244	ZI-CT/Transpa TI-4 yellow	50 g
620245	ZI-CT/Transpa TI-5 grey	50 g
620250	ZI-CT/Pearl Enamel PS-0 white	50 g
620251	ZI-CT/Pearl Enamel PS-1 blue/white	50 g
620252	ZI-CT/Pearl Enamel PS-2 flamingo	50 g
620253	ZI-CT/Pearl Enamel PS-3 orange	50 g
620261	ZI-CT/Opaque Dentine OD-32 havanna	50 g
620262	ZI-CT/Opaque Dentine OD-37 curry	50 g
620263	ZI-CT/Opaque Dentine OD-41 orange	50 g
620264	ZI-CT/Opaque Dentine OD-43 ivory	50 g
620265	ZI-CT/Opaque Dentine OD-44 cuba	50 g
620266	ZI-CT/Approximal Dentine AD-1 light yellow	50 g
620267	ZI-CT/Approximal Dentine AD-2 orange	50 g
620271	ZI-CT/Neck Transpa HT-51 iridescent	50 g
620272	ZI-CT/Neck Transpa HT-52 kaki	50 g

CREATION ZI-CT | ZIRCONIUM DIOXIDE CERAMIC

Article no.	Article name	Content
620273	ZI-CT/Neck Transpa HT-53 sand	50 g
620274	ZI-CT/Neck Transpa HT-54 honey	50 g
620275	ZI-CT/Neck Transpa HT-55 bordeaux	50 g
620276	ZI-CT/Neck Transpa HT-56 ochre	50 g
<b>PORCELAIN 250 g</b>		
620302	ZI-CT/Dentine D-A2	250 g
620303	ZI-CT/Dentine D-A3	250 g
620318	ZI-CT/Enamel E-58	250 g
620319	ZI-CT/Enamel E-59	250 g
620321	ZI-CT/Clear CL-O	250 g
<b>LIQUIDS</b>		
000012	Modelling Liquid high-fusing ML-H	25 ml
000013	Modelling Liquid high-fusing ML-H	50 ml
000014	Modelling Liquid high-fusing ML-H	250 ml
000015	Modelling Liquid high-fusing ML-H	1000 ml
000010	Universal & Glaze Liquid UF/GL	25 ml
000011	Universal & Glaze Liquid UF/GL	50 ml
000025	Shoulder Liquid SPL	25 ml
000026	Shoulder Liquid SPL	50 ml
000090	Moisturing Fluid	25 ml

CREATION ZI-F | LOW-FUSING ZIRCONIUM DIOXIDE CERAMIC

Article no.	Article name	Content
<b>PORCELAIN 4 g – 15 g</b>		
601087	ZI-F/Frame Shade NT	4 g
601074	ZI-F/Glaze GL	10 g
601081	ZI-F/Frame Shade FS-1	10 g
601082	ZI-F/Frame Shade FS-2	10 g
601083	ZI-F/Frame Shade FS-3	10 g
601084	ZI-F/Frame Shade FS-4	10 g
601085	ZI-F/Frame Shade FS-IL (Illusion)	10 g
601086	ZI-F/Frame Shade FS-G (Gingiva)	10 g
602051	ZI-F/Bleach Frame Shade FS-AB	10 g
601091	ZI-F/Neck Dentine HD-01	15 g
601092	ZI-F/Neck Dentine HD-02	15 g
601093	ZI-F/Neck Dentine HD-03	15 g
601094	ZI-F/Neck Dentine HD-04	15 g
602056	ZI-F/Bleach Shoulder SP-AB	15 g
602121	ZI-F/Shoulder SP-21 neutral	15 g
602122	ZI-F/Shoulder SP-22 flamingo	15 g
602123	ZI-F/Shoulder SP-23 sand	15 g
602124	ZI-F/Shoulder SP-24 gold	15 g
602125	ZI-F/Shoulder SP-25 red brown	15 g
602128	ZI-F/Shoulder SP-28 opaque yellow	15 g
602145	ZI-F/Gingiva G1 purple	15 g
602146	ZI-F/Gingiva G2 dark pink	15 g
602147	ZI-F/Gingiva G3 light pink	15 g
602148	ZI-F/Gingiva G4 flamingo	15 g
602149	ZI-F/Gingiva G5 rose	15 g
602150	ZI-F/Gingiva G6 dark pink opaque	15 g
602151	ZI-F/Gingiva GN neutral	15 g
602157	ZI-F/Gingiva G7 violet	15 g
602161	ZI-F/Make In MI-61 ivory	15 g
602163	ZI-F/Make In MI-63 honey	15 g
602165	ZI-F/Make In MI-65 gold	15 g
652132	ZI-F/Opaque Dentine OD-32 havanna	15 g
652137	ZI-F/Opaque Dentine OD-37 curry	15 g
652141	ZI-F/Opaque Dentine OD-41 orange	15 g
652143	ZI-F/Opaque Dentine OD-43 ivory	15 g
652144	ZI-F/Opaque Dentine OD-44 cuba	15 g
652151	ZI-F/Neck Transpa HT-51 iridescent	15 g
652152	ZI-F/Neck Transpa HT-52 kaki	15 g
652153	ZI-F/Neck Transpa HT-53 sand	15 g
652154	ZI-F/Neck Transpa HT-54 honey	15 g
652156	ZI-F/Neck Transpa HT-56 ochre	15 g
652168	ZI-F/Approximal Dentine AD-1 light yellow	15 g
652169	ZI-F/Approximal Dentine AD-2 orange	15 g
<b>PORCELAIN 20 g</b>		
652001	ZI-F/Dentine D-A1	20 g
652002	ZI-F/Dentine D-A2	20 g

CREATION ZI-F | LOW-FUSING ZIRCONIUM DIOXIDE CERAMIC

Article no.	Article name	Content
652003	ZI-F/Dentine D-A3	20 g
652004	ZI-F/Dentine D-A3,5	20 g
652005	ZI-F/Dentine D-A4	20 g
652006	ZI-F/Dentine D-B1	20 g
652007	ZI-F/Dentine D-B2	20 g
652008	ZI-F/Dentine D-B3	20 g
652009	ZI-F/Dentine D-B4	20 g
652010	ZI-F/Dentine D-C1	20 g
652011	ZI-F/Dentine D-C2	20 g
652012	ZI-F/Dentine D-C3	20 g
652013	ZI-F/Dentine D-C4	20 g
652014	ZI-F/Dentine D-D2	20 g
652015	ZI-F/Dentine D-D3	20 g
652016	ZI-F/Dentine D-D4	20 g
652052	ZI-F/Bleach Dentine BD-A	20 g
652053	ZI-F/Bleach Dentine BD-B	20 g
652054	ZI-F/Bleach Dentine BD-B0	20 g
652055	ZI-F/Bleach Enamel S-AB	20 g
652057	ZI-F/Enamel E-57	20 g
652058	ZI-F/Enamel E-58	20 g
652059	ZI-F/Enamel E-59	20 g
652060	ZI-F/Enamel E-60	20 g
652066	ZI-F/Effect Enamel SI-02 medium yellow	20 g
652068	ZI-F/Effect Enamel SI-04 light orange	20 g
652070	ZI-F/Effect Enamel SI-06 heavy orange	20 g
602072	ZI-F/Window UC	20 g
652073	ZI-F/Clear CL-O	20 g
652074	ZI-F/Transpa NT neutral	20 g
652075	ZI-F/Transpa OT opal	20 g
652076	ZI-F/Transpa TI-1 blue	20 g
652077	ZI-F/Transpa TI-2 white	20 g
652078	ZI-F/Transpa TI-3 pink	20 g
652079	ZI-F/Transpa TI-4 yellow	20 g
652080	ZI-F/Transpa TI-5 grey	20 g
652081	ZI-F/Effect Enamel PS-0 white	20 g
652083	ZI-F/Effect Enamel PS-3 orange	20 g
652085	ZI-F/Effect Enamel SO-10 blue	20 g
652086	ZI-F/Effect Enamel SO-11 orange	20 g
652090	ZI-F/Correction Powder KM	20 g
602174	ZI-F/Glaze GL	20 g
<b>PORCELAIN 50 g</b>		
605056	ZI-F/Bleach Shoulder SP-AB	50 g
605121	ZI-F/Shoulder SP-21 neutral	50 g
605122	ZI-F/Shoulder SP-22 flamingo	50 g
605123	ZI-F/Shoulder SP-23 sand	50 g
605124	ZI-F/Shoulder SP-24 gold	50 g
605125	ZI-F/Shoulder SP-25 red brown	50 g

CREATION ZI-F | LOW-FUSING ZIRCONIUM DIOXIDE CERAMIC

Article no.	Article name	Content
605128	ZI-F/Shoulder SP-28 opaque yellow	50 g
605145	ZI-F/Gingiva G1 purple	50 g
605146	ZI-F/Gingiva G2 dark pink	50 g
605147	ZI-F/Gingiva G3 light pink	50 g
605148	ZI-F/Gingiva G4 flamingo	50 g
605149	ZI-F/Gingiva G5 rose	50 g
605150	ZI-F/Gingiva G6 dark pink opaque	50 g
605151	ZI-F/Gingiva GN neutral	50 g
605157	ZI-F/Gingiva G7 violet	50 g
605161	ZI-F/Make In MI-61 ivory	50 g
605163	ZI-F/Make In MI-63 honey	50 g
605165	ZI-F/Make In MI-65 gold	50 g
655001	ZI-F/Dentine D-A1	50 g
655002	ZI-F/Dentine D-A2	50 g
655003	ZI-F/Dentine D-A3	50 g
655004	ZI-F/Dentine D-A3,5	50 g
655005	ZI-F/Dentine D-A4	50 g
655006	ZI-F/Dentine D-B1	50 g
655007	ZI-F/Dentine D-B2	50 g
655008	ZI-F/Dentine D-B3	50 g
655009	ZI-F/Dentine D-B4	50 g
655010	ZI-F/Dentine D-C1	50 g
655011	ZI-F/Dentine D-C2	50 g
655012	ZI-F/Dentine D-C3	50 g
655013	ZI-F/Dentine D-C4	50 g
655014	ZI-F/Dentine D-D2	50 g
655015	ZI-F/Dentine D-D3	50 g
655016	ZI-F/Dentine D-D4	50 g
655052	ZI-F/Bleach Dentine BD-A	50 g
655053	ZI-F/Bleach Dentine BD-B	50 g
655054	ZI-F/Bleach Dentine BD-B0	50 g
655055	ZI-F/Bleach Enamel S-AB	50 g
655057	ZI-F/Enamel E-57	50 g
655058	ZI-F/Enamel E-58	50 g
655059	ZI-F/Enamel E-59	50 g
655060	ZI-F/Enamel E-60	50 g
655066	ZI-F/Effect Enamel SI-02 medium yellow	50 g
655068	ZI-F/Effect Enamel SI-04 light orange	50 g
655070	ZI-F/Effect Enamel SI-06 heavy orange	50 g
605072	ZI-F/Window UC	50 g
655073	ZI-F/Clear CL-O	50 g
655074	ZI-F/Transpa NT neutral	50 g
655075	ZI-F/Transpa OT opal	50 g
655076	ZI-F/Transpa TI-1 blue	50 g
655077	ZI-F/Transpa TI-2 white	50 g
655078	ZI-F/Transpa TI-3 pink	50 g
655079	ZI-F/Transpa TI-4 yellow	50 g
655080	ZI-F/Transpa TI-5 grey	50 g

CREATION ZI-F | LOW-FUSING ZIRCONIUM DIOXIDE CERAMIC

Article no.	Article name	Content
655081	ZI-F/Effect Enamel PS-0 white	50 g
655083	ZI-F/Effect Enamel PS-3 orange	50 g
655085	ZI-F/Effect Enamel SO-10 blue	50 g
655086	ZI-F/Effect Enamel SO-11 orange	50 g
655132	ZI-F/Opaque Dentine OD-32 havanna	50 g
655137	ZI-F/Opaque Dentine OD-37 curry	50 g
655141	ZI-F/Opaque Dentine OD-41 orange	50 g
655143	ZI-F/Opaque Dentine OD-43 ivory	50 g
655144	ZI-F/Opaque Dentine OD-44 cuba	50 g
655151	ZI-F/Neck Transpa HT-51 iridescent	50 g
655152	ZI-F/Neck Transpa HT-52 kaki	50 g
655153	ZI-F/Neck Transpa HT-53 sand	50 g
655154	ZI-F/Neck Transpa HT-54 honey	50 g
655156	ZI-F/Neck Transpa HT-56 ochre	50 g
655168	ZI-F/Approximal Dentine AD-1 light yellow	50 g
655169	ZI-F/Approximal Dentine AD-2 orange	50 g
<b>LIQUIDS</b>		
000016	Modelling Liquid low-fusing ML-L	25 ml
000017	Modelling Liquid low-fusing ML-L	50 ml
000018	Modelling Liquid low-fusing ML-L	250 ml
000010	Universal & Glaze Liquid UF/GL	25 ml
000011	Universal & Glaze Liquid UF/GL	50 ml
000025	Shoulder Liquid SPL	25 ml
000026	Shoulder Liquid SPL	50 ml
000090	Moisturing Fluid	25 ml

CREATION LS/LS PRESS | LITHIUM DISILICATE

Article no.	Article name	Content
<b>INGOTS 3g</b>		
830101	LS/LS Press, MO-0	5 x 3 g
830102	LS/LS Press, MO-1	5 x 3 g
830103	LS/LS Press, MO-2	5 x 3 g
830104	LS/LS Press LT-A	5 x 3 g
830105	LS/LS Press LT-B	5 x 3 g
830106	LS/LS Press LT-C	5 x 3 g
830107	LS/LS Press LT-D	5 x 3 g
830108	LS/LS Press MT-B00	5 x 3 g
830109	LS/LS Press MT-B0	5 x 3 g
830110	LS/LS Press MT-A1	5 x 3 g
830111	LS/LS Press MT-A2	5 x 3 g
830112	LS/LS Press MT-A3	5 x 3 g
830113	LS/LS Press MT-B1	5 x 3 g
830114	LS/LS Press MT-B2	5 x 3 g
830117	LS/LS Press MT-D2	5 x 3 g
830122	LS/LS Press HT-B00	5 x 3 g
830123	LS/LS Press HT-B0	5 x 3 g
830118	LS/LS Press HT-1	5 x 3 g
830119	LS/LS Press HT-2	5 x 3 g
830120	LS/LS Press HT-3	5 x 3 g
830121	LS/LS Press HT-4	5 x 3 g
<b>PORCELAIN 10g – 20g</b>		
830001	LS/Dentine D-A1	20 g
830002	LS/Dentine D-A2	20 g
830003	LS/Dentine D-A3	20 g
830004	LS/Dentine D-A3,5	20 g
830005	LS/Dentine D-A4	20 g
830006	LS/Dentine D-B1	20 g
830007	LS/Dentine D-B2	20 g
830008	LS/Dentine D-B3	20 g
830009	LS/Dentine D-B4	20 g
830010	LS/Dentine D-C1	20 g
830011	LS/Dentine D-C2	20 g
830012	LS/Dentine D-C3	20 g
830013	LS/Dentine D-C4	20 g
830014	LS/Dentine D-D2	20 g
830015	LS/Dentine D-D3	20 g
830016	LS/Dentine D-D4	20 g
830022	LS/Bleach Dentine BD-A	20 g
830023	LS/Bleach Dentine BD-B	20 g
830024	LS/Bleach Dentine BD-B0	20 g
830040	LS/Opaque Dentine OD-32	15 g
830041	LS/Opaque Dentine OD-37	15 g
830042	LS/Opaque Dentine OD-41	15 g
830043	LS/Opaque Dentine OD-43	15 g
830017	LS/Enamel E-57	20 g

Article no.	Article name	Content
830018	LS/Enamel E-58	20 g
830019	LS/Enamel E-59	20 g
830020	LS/Enamel E-60	20 g
830025	LS/Enamel Bleach S-AB	20 g
830021	LS/Clear CL-O	20 g
830026	LS/Transpa NT	20 g
830027	LS/Transpa OT	20 g
830028	LS/Transpa TI-01	20 g
830029	LS/Transpa TI-02	20 g
830030	LS/Transpa TI-03	20 g
830031	LS/Transpa TI-04	20 g
830032	LS/Transpa TI-05	20 g
830033	LS/Pearl Enamel PS-0	20 g
830035	LS/Effect Enamel SI-02	20 g
830036	LS/Effect Enamel SI-04	20 g
830038	LS/Effect Enamel SO-10	20 g
830045	LS/Neck Transpa HT-51	15 g
830046	LS/Neck Transpa HT-52	15 g
830047	LS/Neck Transpa HT-53	15 g
830048	LS/Neck Transpa HT-54	15 g
830050	LS/Make In MI-61	15 g
830051	LS/Make In MI-63	15 g
830052	LS/Correction Powder KM	20 g
830055	LS/Glaze GL	10 g
<b>LIQUIDS</b>		
000016	Modelling Liquid low-fusing ML-L	25 ml
000017	Modelling Liquid low-fusing ML-L	50 ml
000018	Modelling Liquid low-fusing ML-L	250 ml
000010	Universal & Glaze Liquid UF/GL	25 ml
000011	Universal & Glaze Liquid UF/GL	50 ml
000090	Moisturing Fluid	25 ml

Article no.	Article name	Content
001101	Make Up Neo MN-F1 white	4 g
001102	Make Up Neo MN-F2 eggshell white	4 g
001103	Make Up Neo MN-F3 lemon yellow	4 g
001104	Make Up Neo MN-F4 mandarine	4 g
001105	Make Up Neo MN-F5 flamingo	4 g
001106	Make Up Neo MN-F6 apricot	4 g
001107	Make Up Neo MN-F7 light brown	4 g
001108	Make Up Neo MN-F8 medium brown	4 g
001109	Make Up Neo MN-F9 olive	4 g
001110	Make Up Neo MN-F10 red	4 g
001111	Make Up Neo MN-F11 blue	4 g
001112	Make Up Neo MN-F12 grey	4 g
001113	Make Up Neo MN-F13 deep blue	4 g
001114	Make Up Neo MN-FA stain A	4 g
001115	Make Up Neo MN-FB stain B	4 g
001116	Make Up Neo MN-FC stain C	4 g
001117	Make Up Neo MN-FD stain D	4 g
001121	Make Up Neo Glaze GL-F	4 g
001151	In Nova Neo INN-1 melone	3 g
001152	In Nova Neo INN-2 rose	3 g
001153	In Nova Neo INN-3 yellow	3 g
001154	In Nova Neo INN-4 red brown	3 g
001155	In Nova Neo INN-5 brown	3 g
001156	In Nova Neo INN-6 olive	3 g
001157	In Nova Neo INN-7 grey	3 g
001158	In Nova Neo INN-8 blue	3 g
001159	In Nova Neo INN-9 white	3 g
001160	In Nova Neo INN-10 mais	3 g
001161	In Nova Neo INN-IL Illusion	3 g
001162	In Nova Neo INN-CRL Crackliner	3 g
001125	Make Up Neo Fluid	25 ml
001126	Make Up Neo Reconditioner Fluid	8 ml
001163	In Nova Neo Fluid	25 ml

CREATION LIQUIDS

Article no.	Article name	Content
000012	Modelling Liquid high-fusing ML-H	25 ml
000013	Modelling Liquid high-fusing ML-H	50 ml
000014	Modelling Liquid high-fusing ML-H	250 ml
000015	Modelling Liquid high-fusing ML-H	1000 ml
000016	Modelling Liquid low-fusing ML-L	25 ml
000017	Modelling Liquid low-fusing ML-L	50 ml
000018	Modelling Liquid low-fusing ML-L	250 ml
000019	Opaque Liquid high-fusing OL-H	25 ml
000020	Opaque Liquid high-fusing OL-H	50 ml
000021	Opaque Liquid high-fusing OL-H	250 ml
000010	Universal & Glaze Liquid UF/GL	25 ml
000011	Universal & Glaze Liquid UF/GL	50 ml
000025	Shoulder Liquid SPL	25 ml
000026	Shoulder Liquid SPL	50 ml
000090	Moisturing Fluid	25 ml
001125	Make Up Neo Fluid	25 ml
001126	Make Up Neo Reconditioner Fluid	8 ml
001163	In Nova Neo Fluid	25 ml

CREATION CERAMIC ACCESSORIES

Article no.	Article name	Content
000131	Brush Nr. I	1 pc.
000132	Brush Nr. II	1 pc.
000133	Brush Nr. III	1 pc.
000134	Brush Nr. IV	1 pc.
000135	Brush Nr. V	1 pc.
000136	Brush Kit	1 pc.
000321	Brush Creapast	1 pc.
000060	Sketch Pad	1 pc.
839912	LS/Manual DE-EN	1 pc.
910360	ZI-CT/Manual DE-EN	1 pc.
911020	CC/Manual DE-EN	1 pc.
911506	Ceramic meets Gingiva	1 pc.
911510	VC Brochure	1 pc.
911517	VC Workbook	1 pc.
000059	CreaPen Separating Pen	1 pc.
000081	Creation Flüssige firing pad 10 g	1 pc.
000083	Creation Flüssige firing pad (3 x 10 g)	1 pack.

CREATION SHADE GUIDES

Article no.	Article name	Content
<b>KIT-BASED SHADE GUIDES</b>		
000064	CC/Shade Guide Kit 1 804	1 pc.
000068	CC/Shade Guide OM 11-17+G	1 pc.
000073	CC/Shade Guide Kit 2 1508	1 pc.
000087	CC/Shade Guide Transition Dentine	1 pc.
000092	ZI-CT/Shade Guide Kit 1	1 pc.
000093	ZI-CT/Shade Guide Kit 2	1 pc.
000076	ZI-FLF.TI/Shade Guide Kit 1 (28 Shades)	1 pc.
000077	ZI-FLF.TI/Shade Guide Kit 2 (26 Shades)	1 pc.
000058	Creation shade tab	1 pc.
000091	Shade Guide Wheel Empty	1 pc.
<b>SHADE GUIDES</b>		
000040	Shade Guide Dentine A-D (16 tabs)	1 pc.
000041	Shade Guide Opaque Dentine A-D (16 tabs)	1 pc.
000042	Shade Guide Transpa CL, UC, NT, OT (4 tabs)	1 pc.
000043	Shade Guide Opaque Dentine Modifier + AD OD-32, 37, 41, 43, 44, AD-1, 2 (7 tabs)	1 pc.
000044	Shade Guide Enamel E57-E60, SI01-SI06, SO10, SO11, PS0-PS3 (16 tabs)	1 pc.
000045	Shade Guide Transpa Modifier TI1-TI5, HT51-HT56 (11 tabs)	1 pc.
000046	Shade Guide Make In MI61-MI66 (6 tabs)	1 pc.
000047	Shade Guide Shoulder SP21-SP29 (9 tabs)	1 pc.
000048	Shade Guide Gingiva G1-G7, GN (8 tabs)	1 pc.
000049	Shade Guide Bleach BDA, BDB, BDB0, EAB, SP-AB (5 tabs)	1 pc.

Shades A1-D4 are referring to the Vita® Shade Guide.  
 Vita® is a registered trademark of VITA Zahnfabrik H. Rauter GmbH & Co. KG, Bad Säckingen, Germany.

AQUALINE

Article no.	Article name	Content
AMA-001	Aqualine master, mixing tray for ceramic, anthracite	1 pc.
AMA-002	Aqualine master, mixing tray for ceramic, white	1 pc.
AS-001	Aqualine smart, mixing tray for ceramic, anthracite	1 pc.
AS-002	Aqualine smart, mixing tray for ceramic, white	1 pc.
AM-001	Aqualine mini, mixing tray für Keramik, anthracite	1 pc.
AM-002	Aqualine mini, tray box with stain tray, with 15 cavities	1 pc.
AS-014	Aqualine Pool Set	1 pc.
AP-010	Aqualine master, glass plate, light grey	1 pc.
AP-011	Aqualine master, glass plate, dark grey	1 pc.
AS-010	Aqualine smart, glass plate, light grey	1 pc.
AS-011	Aqualine smart, glass plate, dark grey	1 pc.
AP-013	Aqualine master, cellulose strips (40 pcs.)	1 pack.
AS-012	Aqualine smart, cellulose strips (30 pcs.)	1 pack.
AM-010	Aqualine mini, cellulose strips (30 pcs.)	1 pack.
AMA-018	Aqualine master, labels, self-adhesive for stain (5 pcs.)	1 pack.
AMA-019	Aqualine master, labels, self-adhesive for ceramic (20 pcs.)	1 pack.
AS-016	Aqualine master/smart, stain kit, made of porcelain (1 stain tray/1 mixing tray)	1 pc.
AS-015	Aqualine Pool Set, pool set sponge (5 pcs.)	1 pack.
AC-001	Aqualine Glass Care (2 x 30 ml)	1 set
AC-002	Aqualine Two in One Build up Liquid (500 ml)	1 pc.

CREATION VC | LIGHT-CURING COMPOSITE

Article no.	Article name	Content
	<b>PORCELAIN 2 ml – 5 ml</b>	
820005	VC/Base Opaque O-BO	2.4 ml
820006	VC/Cervical Opaque O-CO	2.4 ml
820011	VC/Opaque O-A1	2.4 ml
820012	VC/Opaque O-A2	2.4 ml
820013	VC/Opaque O-A3	2.4 ml
820014	VC/Opaque O-A3.5	2.4 ml
820015	VC/Opaque O-A4	2.4 ml
820016	VC/Opaque O-B1	2.4 ml
820017	VC/Opaque O-B2	2.4 ml
820018	VC/Opaque O-B3	2.4 ml
820019	VC/Opaque O-B4	2.4 ml
820020	VC/Opaque O-C1	2.4 ml
820021	VC/Opaque O-C2	2.4 ml
820022	VC/Opaque O-C3	2.4 ml
820023	VC/Opaque O-C4	2.4 ml
820024	VC/Opaque O-D2	2.4 ml
820025	VC/Opaque O-D3	2.4 ml
820026	VC/Opaque O-D4	2.4 ml
820031	VC/Opaque Dentine OD-32 havanna	2.9 ml
820032	VC/Opaque Dentine OD-37 curry	2.9 ml
820033	VC/Opaque Dentine OD-41 orange	2.9 ml
820034	VC/Opaque Dentine OD-43 ivory	2.9 ml
820035	VC/Opaque Dentine OD-44 cuba	2.9 ml
820041	VC/Dentine D-A1	2.9 ml
820042	VC/Dentine D-A2	2.9 ml
820043	VC/Dentine D-A3	2.9 ml
820044	VC/Dentine D-A3.5	2.9 ml
820045	VC/Dentine D-A4	2.9 ml
820046	VC/Dentine D-B1	2.9 ml
820047	VC/Dentine D-B2	2.9 ml
820048	VC/Dentine D-B3	2.9 ml
820049	VC/Dentine D-B4	2.9 ml
820050	VC/Dentine D-C1	2.9 ml
820051	VC/Dentine D-C2	2.9 ml
820052	VC/Dentine D-C3	2.9 ml
820053	VC/Dentine D-C4	2.9 ml
820054	VC/Dentine D-D2	2.9 ml
820055	VC/Dentine D-D3	2.9 ml
820056	VC/Dentine D-D4	2.9 ml
820057	VC/Enamel E-57	2.9 ml
820058	VC/Enamel E-58	2.9 ml
820059	VC/Enamel E-59	2.9 ml
820060	VC/Enamel E-60	2.9 ml
820061	VC/Pearl Enamel PS-1 blue	2.9 ml
820062	VC/Pearl Enamel PS-2 flamingo	2.9 ml
820063	VC / Effect Enamel SI-01 light yellow	2.9 ml
820064	VC / Effect Enamel SI-02 medium yellow	2.9 ml

CREATION VC | LIGHT-CURING COMPOSITE

Article no.	Article name	Content
820065	VC/Effect Enamel SI-03 heavy yellow	2.9 ml
820066	VC/Transpa TI-01 blue	2.9 ml
820067	VC/Transpa TI-02 white	2.9 ml
820068	VC/Transpa TI-04 yellow	2.9 ml
820069	VC/Transpa TI-05 grey	2.9 ml
820070	VC/Neck Transpa HT-52 khaki	2.9 ml
820071	VC/Neck Transpa HT-53 sand	2.9 ml
820072	VC/Neck Transpa HT-54 honey	2.9 ml
820080	VC/Flow Dentine BW	2.0 ml
820081	VC/Flow Dentine D-A1	2.0 ml
820082	VC/Flow Dentine D-A2	2.0 ml
820083	VC/Flow Dentine D-A3	2.0 ml
820084	VC/Flow Dentine D-A3.5	2.0 ml
820085	VC/Flow Dentine D-B1	2.0 ml
820086	VC/Flow Dentine D-B2	2.0 ml
820087	VC/Flow Dentine D-B3	2.0 ml
820088	VC/Flow Dentine HT	2.0 ml
820089	VC/Flow Opaque Dentine OD-A2	2.0 ml
820090	VC/Flow Opaque Dentine OD-A3	2.0 ml
820091	VC/Flow Enamel EN-L light	2.0 ml
820092	VC/Flow Enamel EN-T transparent	2.0 ml
820100	VC/Gingiva Opaque O-G3 light pink	2.4 ml
820101	VC/Gingiva Opaque O-G4 flamingo	2.4 ml
820102	VC/Gingiva Opaque O-G5 rose	2.4 ml
820103	VC/Gingiva Opaque O-G6 dark pink	2.4 ml
820104	VC/Gingiva G3 light pink	2.9 ml
820105	VC/Gingiva G4 flamingo	2.9 ml
820106	VC/Gingiva G5 rose	2.9 ml
820107	VC/Gingiva G6 dark pink	2.9 ml
820110	VC/Gingiva Modifier GM-1 purple	2.4 ml
820111	VC/Gingiva Modifier GM-2 dark pink	2.4 ml
820112	VC/Gingiva Modifier GM-3 light pink	2.4 ml
820113	VC/Gingiva Modifier GM-5 rose	2.4 ml
820114	VC/Gingiva Modifier GM-6 dark pink opaque	2.4 ml
820115	VC/Gingiva Modifier GM-7 violet	2.4 ml
820116	VC/Gingiva Translucent GT light pink	2.4 ml
820120	VC/MAKE UP NEO MUN-A stain A	2.6 ml
820121	VC/MAKE UP NEO MUN-B stain B	2.6 ml
820122	VC/MAKE UP NEO MUN-C stain C	2.6 ml
820123	VC/MAKE UP NEO MUN-1 white	2.6 ml
820124	VC/MAKE UP NEO MUN-2 eggshell	2.6 ml
820125	VC/MAKE UP NEO MUN-3 lemon yellow	2.6 ml
820126	VC/MAKE UP NEO MUN-4 mandarine	2.6 ml
820127	VC/MAKE UP NEO MUN-7 light brown	2.6 ml
820128	VC/MAKE UP NEO MUN-8 medium brown	2.6 ml
820129	VC/MAKE UP NEO MUN-9 olive	2.6 ml
820130	VC/MAKE UP NEO MUN-10 red	2.6 ml
820131	VC/MAKE UP NEO MUN-11 blue	2.6 ml

CREATION VC | LIGHT-CURING COMPOSITE

Article no.	Article name	Content
820132	VC/MAKE UP NEO MUN-12 grey	2.6 ml
820133	VC/MAKE UP NEO MUN-IL Illusion	2.6 ml
820134	VC/MAKE UP NEO MUN-G Gingiva	2.6 ml
820135	VC/MAKE UP NEO MUN-CL clear	5.0 ml
820136	VC/MAKE UP NEO MUN-CL clear h.c.	5.0 ml
820027	VC/Translucent h.v.	2.4 ml
820028	VC/Translucent l.v.	2.4 ml
	<b>ACCESSORIES</b>	
820150	VC/Syringe Plunger	1 pc.
820151	VC/Separator	5.0 ml
820154	VC/Metal Primer	5.0 ml
820155	VC/Composite Primer	3.0 ml
820156	VC/Ceramic Primer	3.0 ml
820157	VC/Disposable Palette	2 x 5 pcs.
820158	VC/Brush Round, Size 1	2 x 5 pcs.
820159	VC/Brush Flat Size 1	2 x 5 pcs.
820160	VC/Brush Nr. 7	1 pc.
820161	VC/Brush Holder	1 pc.
820152	VC/Diamond Polisher	8 g
820153	VC/Air Protect	10.0 ml
820162	VC/Dispensing tip	20 tips + 1 cap
820163	VC/Mixing Pad	1 pc.



# Creation Denture Teeth

CREOPAL | CREAPEARL 2



## CREOPAL DENTURE TEETH SETS

Article no.	Article name	Tooth shade	Shape	Content
1100305005	Creopal upper jaw anterior tooth	A1	AU05	1 pc.
1100305007	Creopal upper jaw anterior tooth	A1	AU07	1 pc.
1100305010	Creopal upper jaw anterior tooth	A1	AU10	1 pc.
1100305013	Creopal upper jaw anterior tooth	A1	AU13	1 pc.
1100305016	Creopal upper jaw anterior tooth	A1	AU16	1 pc.
1100305019	Creopal upper jaw anterior tooth	A1	AU19	1 pc.
1100305107	Creopal lower jaw anterior tooth	A1	AL07	1 pc.
1100305110	Creopal lower jaw anterior tooth	A1	AL10	1 pc.
1100305113	Creopal lower jaw anterior tooth	A1	AL13	1 pc.
1100305116	Creopal lower jaw anterior tooth	A1	AL16	1 pc.
1100305207	Creopal upper jaw posterior tooth	A1	PU07	1 pc.
1100305210	Creopal upper jaw posterior tooth	A1	PU10	1 pc.
1100305213	Creopal upper jaw posterior tooth	A1	PU13	1 pc.
1100305216	Creopal upper jaw posterior tooth	A1	PU16	1 pc.
1100305307	Creopal lower jaw posterior tooth	A1	PL07	1 pc.
1100305310	Creopal lower jaw posterior tooth	A1	PL10	1 pc.
1100305313	Creopal lower jaw posterior tooth	A1	PL13	1 pc.
1100305316	Creopal lower jaw posterior tooth	A1	PL16	1 pc.
1100315005	Creopal upper jaw anterior tooth	A2	AU05	1 pc.
1100315007	Creopal upper jaw anterior tooth	A2	AU07	1 pc.
1100315010	Creopal upper jaw anterior tooth	A2	AU10	1 pc.
1100315013	Creopal upper jaw anterior tooth	A2	AU13	1 pc.
1100315016	Creopal upper jaw anterior tooth	A2	AU16	1 pc.
1100315019	Creopal upper jaw anterior tooth	A2	AU19	1 pc.
1100315107	Creopal lower jaw anterior tooth	A2	AL07	1 pc.
1100315110	Creopal lower jaw anterior tooth	A2	AL10	1 pc.
1100315113	Creopal lower jaw anterior tooth	A2	AL13	1 pc.
1100315116	Creopal lower jaw anterior tooth	A2	AL16	1 pc.
1100315207	Creopal upper jaw posterior tooth	A2	PU07	1 pc.
1100315210	Creopal upper jaw posterior tooth	A2	PU10	1 pc.
1100315213	Creopal upper jaw posterior tooth	A2	PU13	1 pc.
1100315216	Creopal upper jaw posterior tooth	A2	PU16	1 pc.
1100315307	Creopal lower jaw posterior tooth	A2	PL07	1 pc.
1100315310	Creopal lower jaw posterior tooth	A2	PL10	1 pc.
1100315313	Creopal lower jaw posterior tooth	A2	PL13	1 pc.
1100315316	Creopal lower jaw posterior tooth	A2	PL16	1 pc.
1100325005	Creopal upper jaw anterior tooth	A3	AU05	1 pc.
1100325007	Creopal upper jaw anterior tooth	A3	AU07	1 pc.
1100325010	Creopal upper jaw anterior tooth	A3	AU10	1 pc.
1100325013	Creopal upper jaw anterior tooth	A3	AU13	1 pc.
1100325016	Creopal upper jaw anterior tooth	A3	AU16	1 pc.
1100325019	Creopal upper jaw anterior tooth	A3	AU19	1 pc.
1100325107	Creopal lower jaw anterior tooth	A3	AL07	1 pc.
1100325110	Creopal lower jaw anterior tooth	A3	AL10	1 pc.
1100325113	Creopal lower jaw anterior tooth	A3	AL13	1 pc.
1100325116	Creopal lower jaw anterior tooth	A3	AL16	1 pc.
1100325207	Creopal upper jaw posterior tooth	A3	PU07	1 pc.
1100325210	Creopal upper jaw posterior tooth	A3	PU10	1 pc.





CREOPAL DENTURE TEETH SETS

Article no.	Article name	Tooth shade	Shape	Content
1100435107	Creopal lower jaw anterior tooth	D2	AL07	1 pc.
1100435110	Creopal lower jaw anterior tooth	D2	AL10	1 pc.
1100435113	Creopal lower jaw anterior tooth	D2	AL13	1 pc.
1100435116	Creopal lower jaw anterior tooth	D2	AL16	1 pc.
1100435207	Creopal upper jaw posterior tooth	D2	PU07	1 pc.
1100435210	Creopal upper jaw posterior tooth	D2	PU10	1 pc.
1100435213	Creopal upper jaw posterior tooth	D2	PU13	1 pc.
1100435216	Creopal upper jaw posterior tooth	D2	PU16	1 pc.
1100435307	Creopal lower jaw posterior tooth	D2	PL07	1 pc.
1100435310	Creopal lower jaw posterior tooth	D2	PL10	1 pc.
1100435313	Creopal lower jaw posterior tooth	D2	PL13	1 pc.
1100435316	Creopal lower jaw posterior tooth	D2	PL16	1 pc.
1100445005	Creopal upper jaw anterior tooth	D3	AU05	1 pc.
1100445007	Creopal upper jaw anterior tooth	D3	AU07	1 pc.
1100445010	Creopal upper jaw anterior tooth	D3	AU10	1 pc.
1100445013	Creopal upper jaw anterior tooth	D3	AU13	1 pc.
1100445016	Creopal upper jaw anterior tooth	D3	AU16	1 pc.
1100445019	Creopal upper jaw anterior tooth	D3	AU19	1 pc.
1100445107	Creopal lower jaw anterior tooth	D3	AL07	1 pc.
1100445110	Creopal lower jaw anterior tooth	D3	AL10	1 pc.
1100445113	Creopal lower jaw anterior tooth	D3	AL13	1 pc.
1100445116	Creopal lower jaw anterior tooth	D3	AL16	1 pc.
1100445207	Creopal upper jaw posterior tooth	D3	PU07	1 pc.
1100445210	Creopal upper jaw posterior tooth	D3	PU10	1 pc.
1100445213	Creopal upper jaw posterior tooth	D3	PU13	1 pc.
1100445216	Creopal upper jaw posterior tooth	D3	PU16	1 pc.
1100445307	Creopal lower jaw posterior tooth	D3	PL07	1 pc.
1100445310	Creopal lower jaw posterior tooth	D3	PL10	1 pc.
1100445313	Creopal lower jaw posterior tooth	D3	PL13	1 pc.
1100445316	Creopal lower jaw posterior tooth	D3	PL16	1 pc.
1100455005	Creopal upper jaw anterior tooth	D4	AU05	1 pc.
1100455007	Creopal upper jaw anterior tooth	D4	AU07	1 pc.
1100455010	Creopal upper jaw anterior tooth	D4	AU10	1 pc.
1100455013	Creopal upper jaw anterior tooth	D4	AU13	1 pc.
1100455016	Creopal upper jaw anterior tooth	D4	AU16	1 pc.
1100455019	Creopal upper jaw anterior tooth	D4	AU19	1 pc.
1100455107	Creopal lower jaw anterior tooth	D4	AL07	1 pc.
1100455110	Creopal lower jaw anterior tooth	D4	AL10	1 pc.
1100455113	Creopal lower jaw anterior tooth	D4	AL13	1 pc.
1100455116	Creopal lower jaw anterior tooth	D4	AL16	1 pc.
1100455207	Creopal upper jaw posterior tooth	D4	PU07	1 pc.
1100455210	Creopal upper jaw posterior tooth	D4	PU10	1 pc.
1100455213	Creopal upper jaw posterior tooth	D4	PU13	1 pc.
1100455216	Creopal upper jaw posterior tooth	D4	PU16	1 pc.
1100455307	Creopal lower jaw posterior tooth	D4	PL07	1 pc.
1100455310	Creopal lower jaw posterior tooth	D4	PL10	1 pc.
1100455313	Creopal lower jaw posterior tooth	D4	PL13	1 pc.
1100455316	Creopal lower jaw posterior tooth	D4	PL16	1 pc.

CREOPAL DENTURE TEETH SETS

Article no.	Article name	Tooth shade	Shape	Content
1100465005	Creopal upper jaw anterior tooth	FW2	AU05	1 pc.
1100465007	Creopal upper jaw anterior tooth	FW2	AU07	1 pc.
1100465010	Creopal upper jaw anterior tooth	FW2	AU10	1 pc.
1100465013	Creopal upper jaw anterior tooth	FW2	AU13	1 pc.
1100465016	Creopal upper jaw anterior tooth	FW2	AU16	1 pc.
1100465019	Creopal upper jaw anterior tooth	FW2	AU19	1 pc.
1100465107	Creopal lower jaw anterior tooth	FW2	AL07	1 pc.
1100465110	Creopal lower jaw anterior tooth	FW2	AL10	1 pc.
1100465113	Creopal lower jaw anterior tooth	FW2	AL13	1 pc.
1100465116	Creopal lower jaw anterior tooth	FW2	AL16	1 pc.
1100475005	Creopal upper jaw anterior tooth	FW5	AU05	1 pc.
1100475007	Creopal upper jaw anterior tooth	FW5	AU07	1 pc.
1100475010	Creopal upper jaw anterior tooth	FW5	AU10	1 pc.
1100475013	Creopal upper jaw anterior tooth	FW5	AU13	1 pc.
1100475016	Creopal upper jaw anterior tooth	FW5	AU16	1 pc.
1100475019	Creopal upper jaw anterior tooth	FW5	AU19	1 pc.
1100475107	Creopal lower jaw anterior tooth	FW5	AL07	1 pc.
1100475110	Creopal lower jaw anterior tooth	FW5	AL10	1 pc.
1100475113	Creopal lower jaw anterior tooth	FW5	AL13	1 pc.
1100475116	Creopal lower jaw anterior tooth	FW5	AL16	1 pc.



CREOPAL SHELL - SETS

Article no.	Article name	Tooth shade	Shape	Content
1200375116	Creopal Shell lower jaw anterior tooth	B3	SAL16	1 pc.
1200375210	Creopal Shell upper jaw posterior tooth	B3	SPU10	1 pc.
1200375213	Creopal Shell upper jaw posterior tooth	B3	SPU13	1 pc.
1200375216	Creopal Shell upper jaw posterior tooth	B3	SPU16	1 pc.
1200375219	Creopal Shell upper jaw posterior tooth	B3	SPU19	1 pc.
1200375310	Creopal Shell lower jaw posterior tooth	B3	SPL10	1 pc.
1200375313	Creopal Shell lower jaw posterior tooth	B3	SPL13	1 pc.
1200375316	Creopal Shell lower jaw posterior tooth	B3	SPL16	1 pc.
1200375319	Creopal Shell lower jaw posterior tooth	B3	SPL19	1 pc.
1200475010	Creopal Shell upper jaw anterior tooth	FW5	SAU10	1 pc.
1200475013	Creopal Shell upper jaw anterior tooth	FW5	SAU13	1 pc.
1200475016	Creopal Shell upper jaw anterior tooth	FW5	SAU16	1 pc.
1200475019	Creopal Shell upper jaw anterior tooth	FW5	SAU19	1 pc.
1200475110	Creopal Shell lower jaw anterior tooth	FW5	SAL10	1 pc.
1200475113	Creopal Shell lower jaw anterior tooth	FW5	SAL13	1 pc.
1200475116	Creopal Shell lower jaw anterior tooth	FW5	SAL16	1 pc.

CREOPAL DENTURE TEETH - PRESENTATION BOX

Article no.	Article name	Tooth shade	Shape	Content
1100000010	Creopal Presentation Box, blank			1 pc.
1100000011	Creopal Presentation Box, incl. 33 sets	A1	all shapes	1 pc.
1100000012	Creopal Presentation Box, incl. 33 sets	A2	all shapes	1 pc.
1100000013	Creopal Presentation Box, incl. 33 sets	A3	all shapes	1 pc.
1100000014	Creopal Presentation Box, incl. 33 sets	A3.5	all shapes	1 pc.
1100000017	Creopal Presentation Box, incl. 33 sets	B2	all shapes	1 pc.
1100000018	Creopal Presentation Box, incl. 33 sets	B3	all shapes	1 pc.

CREOPAL ACCESSORIES

Article no.	Article name	Tooth shade	Shape	Content
1200000001	Creopal Primer			1 pc.
1100000001	Creopal Shade Guide			1 pc.
1000300030	Tooth cabinet (blank, without inlays, 5 drawers)			1 pc.
PEARL00003	Assortment inlay for 72 anterior sets			1 pc.
PEARL00004	Assortment inlay for 48 posterior sets			1 pc.

CREAPEARL 2 DENTURE TEETH SETS

Article no.	Article name	Tooth shade	Shape	Content
1000106002	Creapearl 2 upper jaw anterior tooth Typee Vario	A1	V61	1 pc.
1000106003	Creapearl 2 upper jaw anterior tooth Type Vario	A1	V63	1 pc.
1000106004	Creapearl 2 upper jaw anterior tooth Type Vario	A1	V65	1 pc.
1000106005	Creapearl 2 upper jaw anterior tooth Type Vario	A1	V68	1 pc.
1000106006	Creapearl 2 upper jaw anterior tooth Type Vario	A1	V69	1 pc.
1000106007	Creapearl 2 upper jaw anterior tooth Type Anatomic	A1	A71	1 pc.
1000106008	Creapearl 2 upper jaw anterior tooth Type Anatomic	A1	A73	1 pc.
1000106009	Creapearl 2 upper jaw anterior tooth Type Anatomic	A1	A75	1 pc.
1000106010	Creapearl 2 upper jaw anterior tooth Type Anatomic	A1	A78	1 pc.
1000106011	Creapearl 2 upper jaw anterior tooth Type Anatomic	A1	A79	1 pc.
1000106012	Creapearl 2 lower jaw anterior tooth Type U	A1	U1	1 pc.
1000106013	Creapearl 2 lower jaw anterior tooth Type U	A1	U3	1 pc.
1000106014	Creapearl 2 lower jaw anterior tooth Type U	A1	U5	1 pc.
1000106015	Creapearl 2 lower jaw anterior tooth Type U	A1	U7	1 pc.
1000106016	Creapearl 2 lower jaw anterior tooth Type U	A1	U9	1 pc.
1000106017	Creapearl 2 upper jaw posterior tooth Type Dynamicline	A1	DL	1 pc.
1000106018	Creapearl 2 lower jaw posterior tooth Type Dynamicline	A1	DL	1 pc.
1000106019	Creapearl 2 upper jaw posterior tooth Type Dynamicline	A1	DM	1 pc.
1000106020	Creapearl 2 lower jaw posterior tooth Type Dynamicline	A1	DM	1 pc.
1000106021	Creapearl 2 upper jaw posterior tooth Type Dynamicline	A1	DS	1 pc.
1000106022	Creapearl 2 lower jaw posterior tooth Type Dynamicline	A1	DS	1 pc.
1000106023	Creapearl 2 upper jaw posterior tooth Type Balanceline	A1	EM	1 pc.
1000106024	Creapearl 2 lower jaw posterior tooth Type Balanceline	A1	EM	1 pc.
1000106025	Creapearl 2 upper jaw posterior tooth Type Balanceline	A1	ES	1 pc.
1000106026	Creapearl 2 lower jaw posterior tooth Type Balanceline	A1	ES	1 pc.
1000106027	Creapearl 2 upper jaw posterior tooth Type Balanceline	A1	FM	1 pc.
1000106028	Creapearl 2 lower jaw posterior tooth Type Balanceline	A1	FM	1 pc.
1000106029	Creapearl 2 upper jaw posterior tooth Type Balanceline	A1	FS	1 pc.
1000106030	Creapearl 2 lower jaw posterior tooth Type Balanceline	A1	FS	1 pc.
1000106031	Creapearl 2 upper jaw posterior tooth Type Gnathosline	A1	GM	1 pc.
1000106032	Creapearl 2 lower jaw posterior tooth Type Gnathosline	A1	GM	1 pc.
1000106033	Creapearl 2 upper jaw posterior tooth Type Gnathosline	A1	GS	1 pc.
1000106034	Creapearl 2 lower jaw posterior tooth Type Gnathosline	A1	GS	1 pc.
1000116002	Creapearl 2 upper jaw anterior tooth Type Vario	A2	V61	1 pc.
1000116003	Creapearl 2 upper jaw anterior tooth Type Vario	A2	V63	1 pc.
1000116004	Creapearl 2 upper jaw anterior tooth Type Vario	A2	V65	1 pc.
1000116005	Creapearl 2 upper jaw anterior tooth Type Vario	A2	V68	1 pc.
1000116006	Creapearl 2 upper jaw anterior tooth Type Vario	A2	V69	1 pc.
1000116007	Creapearl 2 upper jaw anterior tooth Type Anatomic	A2	A71	1 pc.
1000116008	Creapearl 2 upper jaw anterior tooth Type Anatomic	A2	A73	1 pc.
1000116009	Creapearl 2 upper jaw anterior tooth Type Anatomic	A2	A75	1 pc.
1000116010	Creapearl 2 upper jaw anterior tooth Type Anatomic	A2	A78	1 pc.
1000116011	Creapearl 2 upper jaw anterior tooth Type Anatomic	A2	A79	1 pc.
1000116012	Creapearl 2 lower jaw anterior tooth Type U	A2	U1	1 pc.
1000116013	Creapearl 2 lower jaw anterior tooth Type U	A2	U3	1 pc.
1000116014	Creapearl 2 lower jaw anterior tooth Type U	A2	U5	1 pc.
1000116015	Creapearl 2 lower jaw anterior tooth Type U	A2	U7	1 pc.
1000116016	Creapearl 2 lower jaw anterior tooth Type U	A2	U9	1 pc.













C R E A P E A R L 2 D E N T U R E T E E T H - P R E S E N T A T I O N B O X

Article no.	Article name	Tooth shade	Shape	Content
CR00000001	Creopal Presentation Box, blank			1 pc.
1000300011	Creapearl 2 Presentation Box, incl. 33 sets	A1	all shapes	1 pc.
1000300012	Creapearl 2 Presentation Box, incl. 33 sets	A2	all shapes	1 pc.
1000300013	Creapearl 2 Presentation Box, incl. 33 sets	A3	all shapes	1 pc.
1000300014	Creapearl 2 Presentation Box, incl. 33 sets	A3,5	all shapes	1 pc.

C R E A P E A R L 2 A C C E S S O R I E S

Article no.	Article name	Tooth shade	Shape	Content
1000300009	Creapearl 2 Tooth shade guide			1 pc.
1000300030	Tooth cabinet (blank, without inlays, 5 drawers)			1 pc.
PEARL00003	Assortment inlay for 72 anterior sets			1 pc.
PEARL00004	Assortment inlay for 48 posterior sets			1 pc.

---

## Notice

---



YOUR LOCAL DEALER



Phone +43 (0)5522 76784, Fax +43 (0)5522 76784-59 | info@creation-willigeller.com, www.creation-willigeller.com  
DISTRIBUTOR  
Creation Willi Geller International GmbH | Koblacherstraße 3, 6812 Meiningen, Austria  
MANUFACTURER  
KLEMA Dentalprodukte GmbH | Koblacherstraße 3a, 6812 Meiningen, Austria

WILLI GELLER  
*Creation*  
SIMPLY BRILLIANT